

UDOT Report on North County Blvd. Traffic Concerns March 13, 2019



Notes

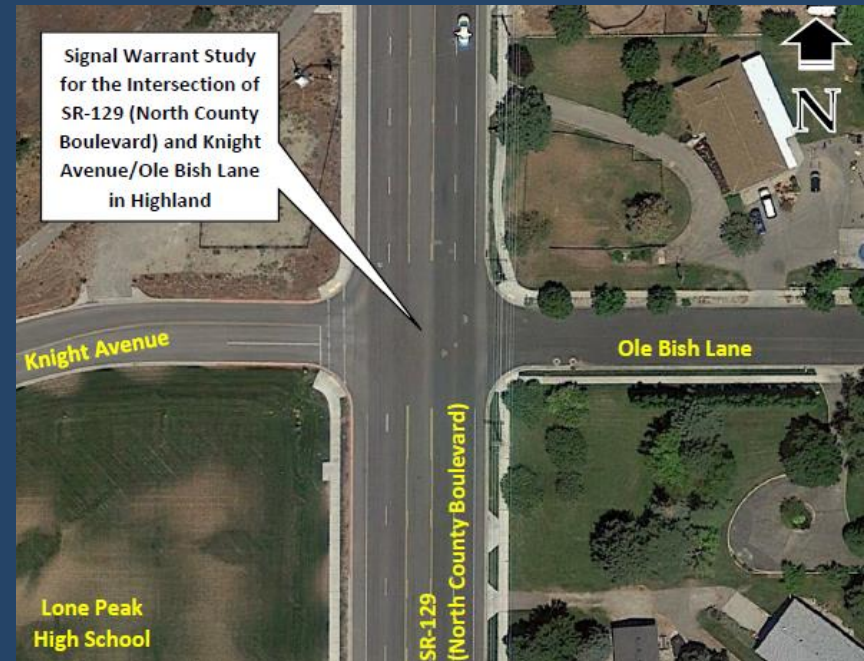
- This is an edited copy of the presentation given by Todd Trane, Highland City Engineer, on March 13th
- *Italicized text represent discussion notes from the meeting.*
- Some slides were updated to more clearly reflect UDOT positions.

Resident Concerns from Sept 2018

- N. County Blvd & Knight Ave signal
- N. County Blvd & Country Club Dr. marked crosswalk
- Restriping center turn lane for dedicated turn lanes
- SB & NB at Panorama Dr. & Country Club Dr.
- Add “Do Not Block Intersection” signs at Panorama Dr. and Country Club Dr.
- Signal adjustments at SR-92 & N. County Blvd .
- Parking on N. County Blvd.
- Speed limit on N. County Blvd.
- *Speed feedback signs*

N. County Blvd & Knight Ave Signal

- Met peak hour warrant during high school dismissal time.
- May be beneficial other times of the day during events in and around the school, but these are not at traditional peak times.
- Cost to install is high due to ROW acquisition and utility relocation.



- *Re-evaluate after East-West Connector (Canal Blvd) is constructed.*

N. County Blvd & Country Club Dr. Marked Crosswalk

- The crosswalk is not warranted. Should either be removed or enhanced based on UDOT Policy 06C-27. *Plan is to remove it.*
- Pedestrians destined for LDS church can and should use signal at SR-92 even though it is a little out of the way.



- *Will install a button activated flashing light at free right off of SR92. Activation buttons will be available at the sidewalk and island.*

Restriping Center Turn Lane

- Installing dedicated turn lanes SB & NB at Panorama Dr. & Country Club Dr.

This would reduce capacity of the turn lane; reduce storage capability during peak usage and cause spill over into through lanes. Will not be implemented.

“Do Not Block Intersection” Signage

- *UDOT does put painted information in front of Police and Fire Stations.*
- Not necessary since it's already a state law, and there is not a specific need for it such as an access to a fire station or similar.
- *Subsequent to meeting we asked UDOT to reconsider. We will update you when we hear back.*

Signal Adjustments At SR-92/N. County Blvd ...

- *UDOT regularly evaluates and adjusts signal timing.*
- Any timing or phasing adjustment to create a gap in the EB free right or SB through movements for residents coming out of Panorama Dr. or Country Club Dr. will cause additional queuing and delay to EB through, EB right turn lane, and SB through demand.
- The purpose of the free right was to move that traffic and allow for residents on the south side of SR-92 west of SR-129 to get out of their driveways easier, and to reduce the queuing all the way to SR-74.

Signal Adjustments At SR-92/N. County Blvd

- Adding a standard ped push button for the crosswalk across the free right movement also defeats the purpose of the free right movement.
- Enhancing the crosswalk across the free right movement with a RRFB type of flashing beacon is something that UDOT can implement since the amount of pedestrians using the crossing during the peak right turn volume is very low, and it would not affect the signal timing or phasing. Pedestrians would still have to understand they are at risk when entering the roadway. *This is what will be implemented.*

Parking on N. County Blvd

- Will be eliminated this summer with the installation of bike lanes on either side of N. County Blvd.

Speed limit on N. County Blvd

- Most recent study showed the 85th percentile speed on N. County Blvd traveled at 45 to 50 mph. UDOT policy, consistent with national standards it to use the low range of the speed range 45 mph.
- *A number of residents expressed concern over the 45 mph limit. However, the limit was determined based on national and UDOT standards so it is unlikely the speed limit will be changing.*

Other Items ...

- *Install speed feedback signs. UDOT will look at this. Response in the meeting was positive.*
- *Street parking on the east side of the Country Club is an issue during the summer. Can the city put up signs that indicate no country club parking. Also could we put a children at play sign on country club drive*
- *The city should to talk with Country Club management about the issue. City will get back on this.*
- *Can we do a merge lane for southbound traffic coming off of country club? Our city engineer will look into it.*

Other Items

- *Mayor to talk with Forest Service about putting a road through from the east side of Country Club onto SR92. Note, I spoke with the Russ Hanson the District ranger and a road is incompatible with their current plans for the land. We will continue to look at the issue and see if a compromise can be reached.*
- *Mayor to talk with Chief Gwilliam about enforcing not blocking the intersection and illegal U-turns. Done. The Chief will work on the U-turn issue. Intersection blocking is more difficult to enforce.*