



HIGHLAND CITY

STANDARD DRAWINGS

2021

Passed and Adopted by the Highland City Council, November 9th, 2021
Ordinance No. O-2021-25

STANDARD DRAWINGS

TABLE OF CONTENTS

Street Drawings

- ST-01 Minor Street Cross Sections
- ST-02 Major Street Cross Sections
- ST-03 Curb and Gutter Detail
- ST-04 Stop Sign Detail
- ST-05 Sight Triangle Detail
- ST-06 Parkway Landscape Detail
- ST-07 Curb Return At Intersection

Utility Drawings

- U-01 Utility Locations at Intersections
- U-02 Conduit Bank Detail
- U-03 Utility Trench Cross Section
- U-04 Street Light Base Detail

Storm Drain Drawings

- SD-01 Storm Drain and Sump Detail
- SD-02 Storm Drain Trench Cross Section

Sanitary Sewer Drawings

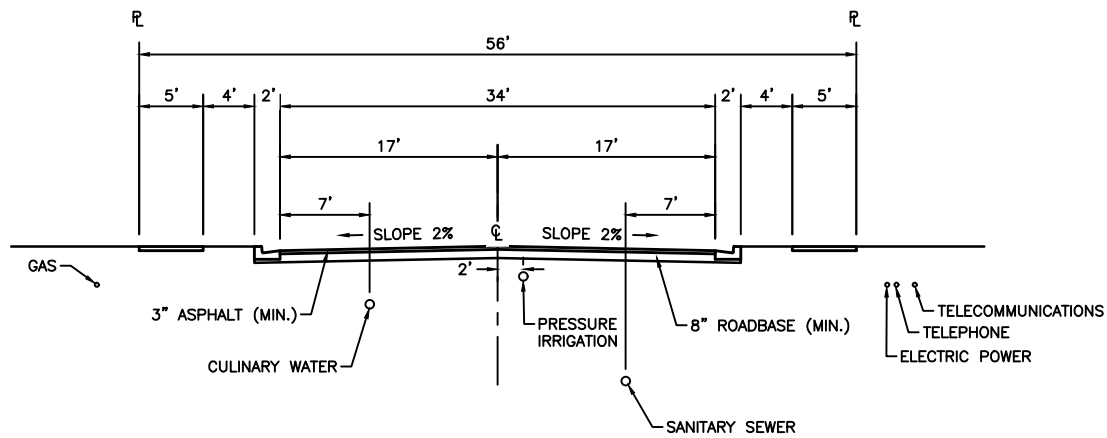
- SS-01 Sewer Lateral Detail
- SS-02 Sewer Installation and Road Repair
- SS-03 Sewer Manhole Detail
- SS-04 Sanitary Sewer Drop Manhole Detail

Culinary Water Drawings

- DW-01 Water Meter Detail
- DW-02 Commercial Water Meter Vault
- DW-03 Fire Hydrant Detail
- DW-04 Water Trench Detail
- DW-05 Polyethylene Wrap Detail

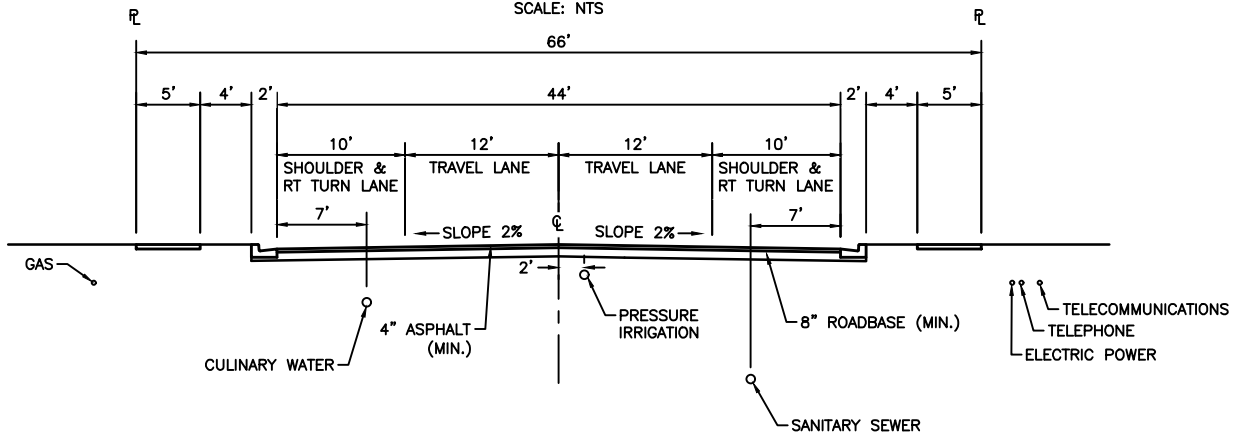
Pressure Irrigation Drawings

- PI-01 P.I. Service Detail
- PI-02 P.I. 1-inch Meter Box Detail
- PI-03 P.I. Water Line Trench Detail
- PI-04 P.I. Drain Detail
- PI-05 P.I. Blow-off in Cul-de-sac
- PI-06 Temporary P.I. Blow-off Detail



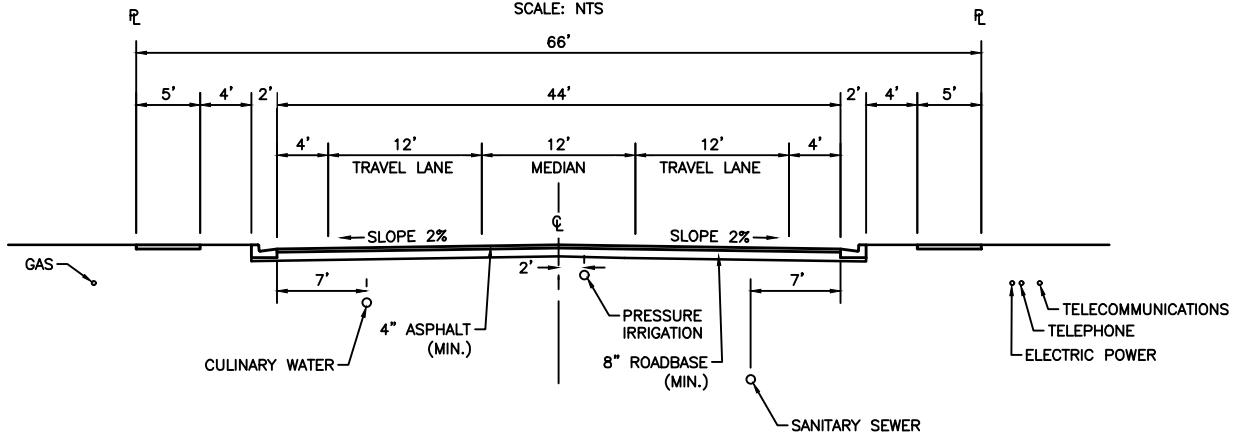
56' STREET CROSS-SECTION
STANDARD SUBDIVISION STREET
LOOKING NORTH OR EAST

SCALE: NTS



66' STREET CROSS-SECTION
TWO LANE MINOR COLLECTOR
LOOKING NORTH OR EAST

SCALE: NTS



66' STREET CROSS-SECTION
THREE LANE MINOR COLLECTOR
LOOKING NORTH OR EAST

SCALE: NTS

NOTES:

- WHENEVER POSSIBLE, CULINARY WATER LINES SHALL BE INSTALLED ON THE NORTH AND WEST SIDE OF THE STREET.
- MANHOLES AND VALVES SHALL BE ADJUSTED OUT OF TIRE TRAVEL LANE.
- FIRE HYDRANTS SHALL BE LOCATED EVERY 400 FEET AND ON THE SAME SIDE AS THE CULINARY WATER LINES OR AS APPROVED BY THE CITY.
- REQUIRED UTILITY PIPE SIZES AS FOLLOWS:
CULINARY WATER - 8" MIN
PRESSURE IRRIGATION - 8" MIN
SANITARY SEWER - 8" MIN
STORM DRAIN - 15" MIN
- REQUIRED COVER OVER UTILITY LINES AS FOLLOWS:
CULINARY WATER - 48" TO 60"
PRESSURE IRRIGATION - 24" TO 36"
SANITARY SEWER - 10' TO 12'
STORM DRAIN - PER DESIGN
ALL OTHERS - PER UTILITY

STATEMENT OF USE

THIS DOCUMENT AND ANY ILLUSTRATIONS HEREON ARE PROVIDED AS STANDARD CONSTRUCTION DETAILS WITHIN HIGHLAND CITY. DEVIATION FROM THIS DOCUMENT REQUIRES APPROVAL OF HIGHLAND CITY. HIGHLAND CITY CORP. CAN NOT BE HELD LIABLE FOR MISUSE OR CHANGES REGARDING THIS DOCUMENT.

FILE: HIGHLAND STD DRAWINGS

DRAWN BY: MJB

DESIGN BY: MJB

CHECKED BY: TMT



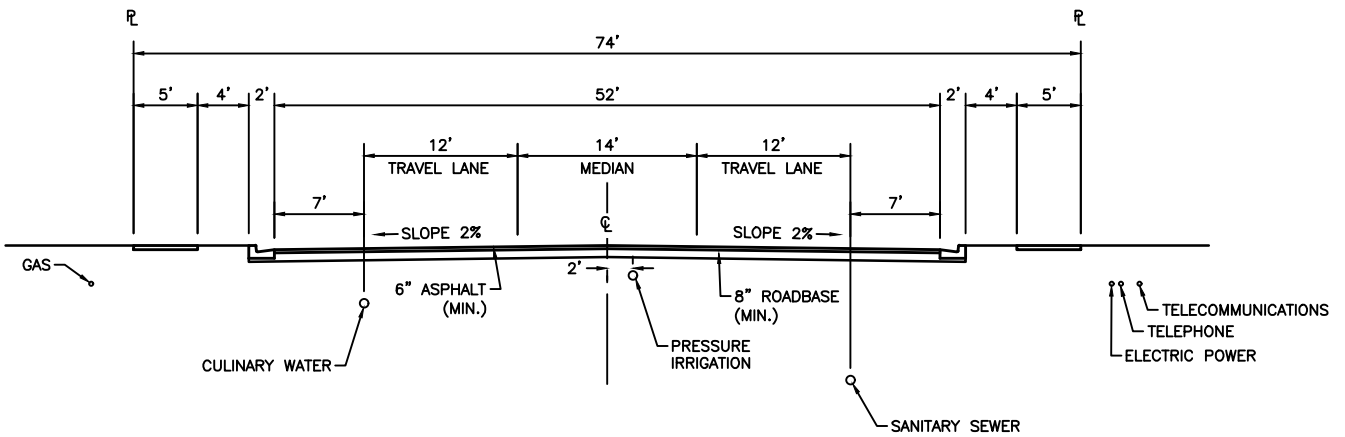
HIGHLAND CITY
PUBLIC WORKS AND ENGINEERING

MINOR STREET CROSS SECTIONS

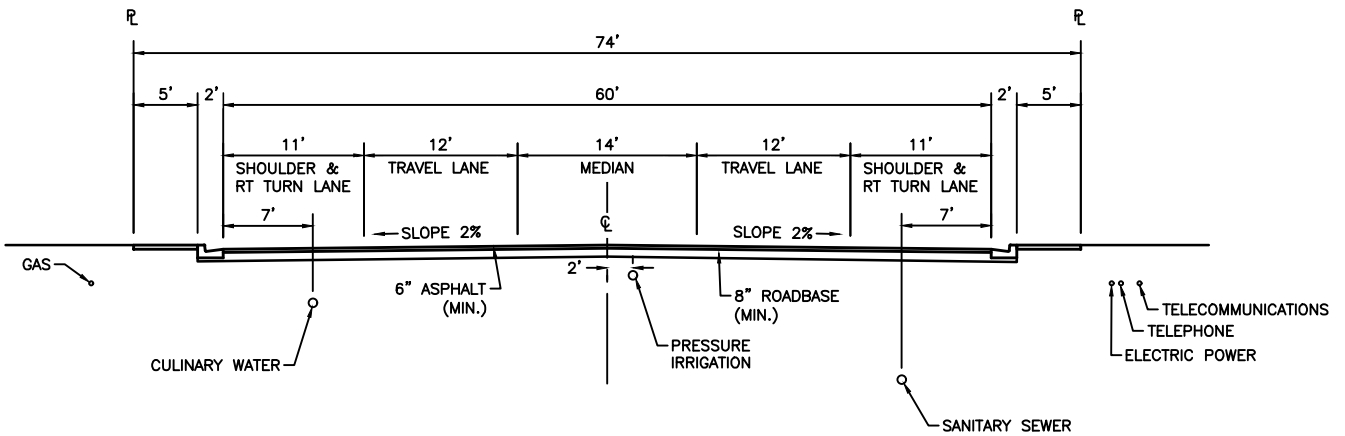
STD DWG #

ST-01

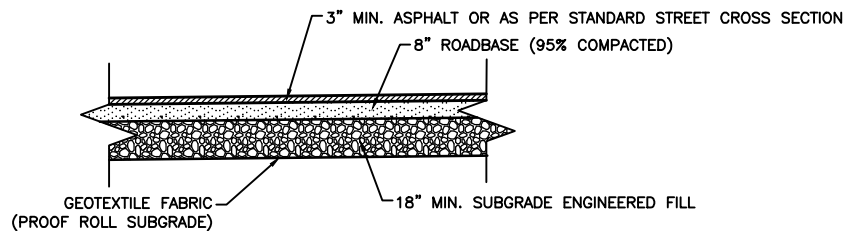
NO.	REVISION DESCRIPTION	BY	DATE	LAST UPDATED: 5/6/2021
-----	----------------------	----	------	------------------------



74' STREET CROSS-SECTION
THREE LANE MAJOR COLLECTOR
LOOKING NORTH OR EAST
SCALE: NTS



74' STREET CROSS-SECTION
THREE LANE MAJOR COLLECTOR AT INTERSECTIONS
(NO PARKING PERMITTED WITHIN 300' OF THE INTERSECTION)
LOOKING NORTH OR EAST
SCALE: NTS



NORTHWEST AREA ROAD PAVEMENT SECTION
SCALE: NTS

NOTES:

- WHENEVER POSSIBLE, CULINARY WATER LINES SHALL BE INSTALLED ON THE NORTH AND WEST SIDE OF THE STREET.
- MANHOLES AND VALVES SHALL BE ADJUSTED OUT OF TIRE TRAVEL LANE.
- FIRE HYDRANTS SHALL BE LOCATED EVERY 400 FEET AND ON THE SAME SIDE AS THE CULINARY WATER LINES OR AS APPROVED BY THE CITY.
- REQUIRED UTILITY PIPE SIZES AS FOLLOWS:
CULINARY WATER - 8" MIN
PRESSURE IRRIGATION - 8" MIN
SANITARY SEWER - 8" MIN
STORM DRAIN - 15" MIN
- REQUIRED COVER OVER UTILITY LINES AS FOLLOWS:
CULINARY WATER - 48" TO 60"
PRESSURE IRRIGATION - 24" TO 36"
SANITARY SEWER - 10' TO 12'
STORM DRAIN - PER DESIGN
ALL OTHERS - PER UTILITY

STATEMENT OF USE

THIS DOCUMENT AND ANY ILLUSTRATIONS HEREON ARE PROVIDED AS STANDARD CONSTRUCTION DETAILS WITHIN HIGHLAND CITY. DEVIATION FROM THIS DOCUMENT REQUIRES APPROVAL OF HIGHLAND CITY. HIGHLAND CITY CORP. CAN NOT BE HELD LIABLE FOR MISUSE OR CHANGES REGARDING THIS DOCUMENT.

FILE: HIGHLAND STD DRAWINGS

DRAWN BY: JMM

DESIGN BY: CRW

CHECKED BY: TMT

HIGHLAND CITY

HIGHLAND CITY
PUBLIC WORKS AND ENGINEERING

MAJOR STREET CROSS SECTIONS

STD DWG #

ST-02

NO. REVISION DESCRIPTION BY APR. DATE LAST UPDATED: 5/6/2021

Technical drawing of a curb and gutter cross-section. The curb is 12" high and 24" wide at the top. It has a 6" wide top flange and an 18" wide sloped face. The sloped face has a 1 1/2" vertical drop and a 3/4" radius. The curb is set on an 8" typical roadbase. The gutter is 6" deep and 8" wide at the bottom. The drawing shows the curb, gutter, and roadbase layers.

*CURB STAMPS FOR ALL UTILITIES AT LATERAL LOCATION

"S" - SEWER
"W" - WATER
"PI" - PRESSURIZED IRRIGATION
"U" - UTILITIES CONDUIT

STATEMENT OF USE
THIS DOCUMENT AND ANY ILLUSTRATIONS HEREON ARE PROVIDED AS
STANDARD CONSTRUCTION DETAILS WITHIN HIGHLAND CITY. DEVIATION
FROM THIS DOCUMENT REQUIRES APPROVAL OF HIGHLAND CITY.
HIGHLAND CITY CORP. CAN NOT BE HELD LIABLE FOR MISUSE OR
CHANGES REGARDING THIS DOCUMENT.

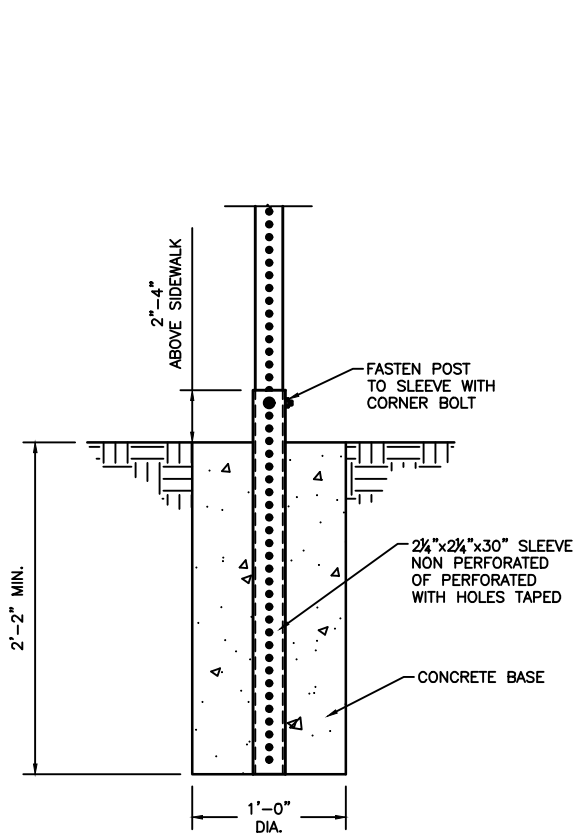
DRAWN BY: JMM
DESIGN BY: CRW
CHECKED BY: TM



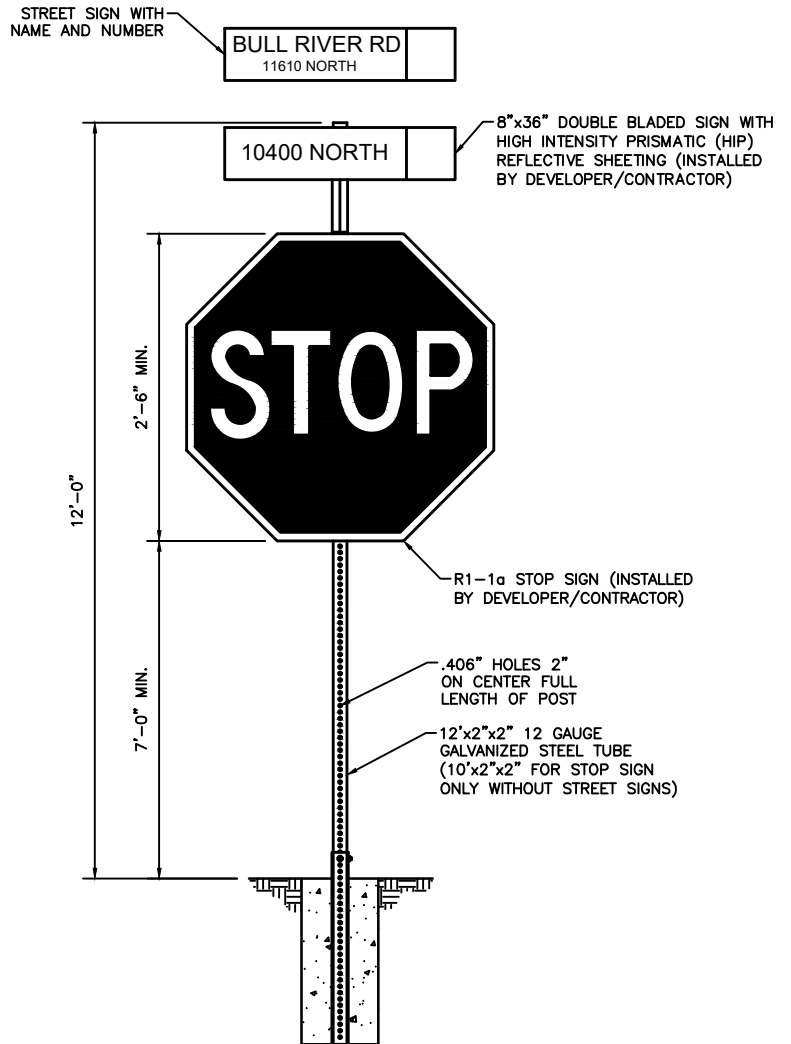
CURB AND GUTTER DETAIL

ST-03

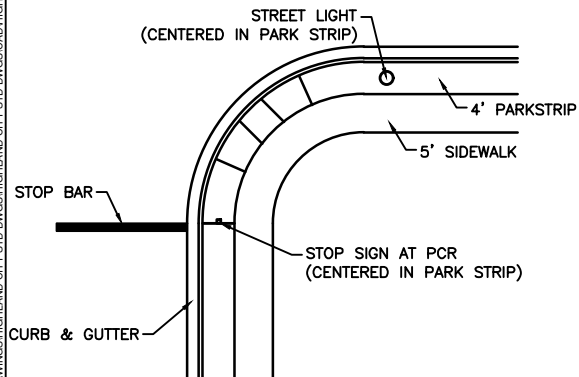
					CHECKED BY: TMT
NO	REVISION DESCRIPTION	RY	APR	DATE	LAST UPDATED: 5/6/2021



GROUND INSTALLATION DETAIL
(W/ONE PIECE BREAKAWAY ANCHOR)
SCALE: NTS



TYPICAL STREET/STOP SIGN
INSTALLATION
SCALE: NTS



TYPICAL STREET/STOP SIGN
AND LIGHT LOCATION
PLAN VIEW
SCALE: NTS

NOTES:

1. STREET SIGN SHALL BE 8"x36" DOUBLE BLADED WITH HIGHLAND LOGO. IF THE STREET HAS A NAME, THE NAME SHALL BE PLACED ABOVE IN LARGE LETTERS AND THE NUMBER BELOW IN SMALL LETTERS. (INSTALLED BY DEVELOPER/CONTRACTOR)
2. ALL STOP SIGNS SHALL BE TYPE 9 "DIAMOND GRADE".
3. CONTRACTOR/DEVELOPER SHALL COORDINATE STAKING LOCATION WITH PUBLIC WORKS REPRESENTATIVE.

STATEMENT OF USE

THIS DOCUMENT AND ANY ILLUSTRATIONS HEREON ARE PROVIDED AS STANDARD CONSTRUCTION DETAILS WITHIN HIGHLAND CITY. DEVIATION FROM THIS DOCUMENT REQUIRES APPROVAL OF HIGHLAND CITY. HIGHLAND CITY CORP. CAN NOT BE HELD LIABLE FOR MISUSE OR CHANGES REGARDING THIS DOCUMENT.

FILE: HIGHLAND STD DRAWINGS

DRAWN BY: JMM

DESIGN BY: CRW

CHECKED BY: TMT



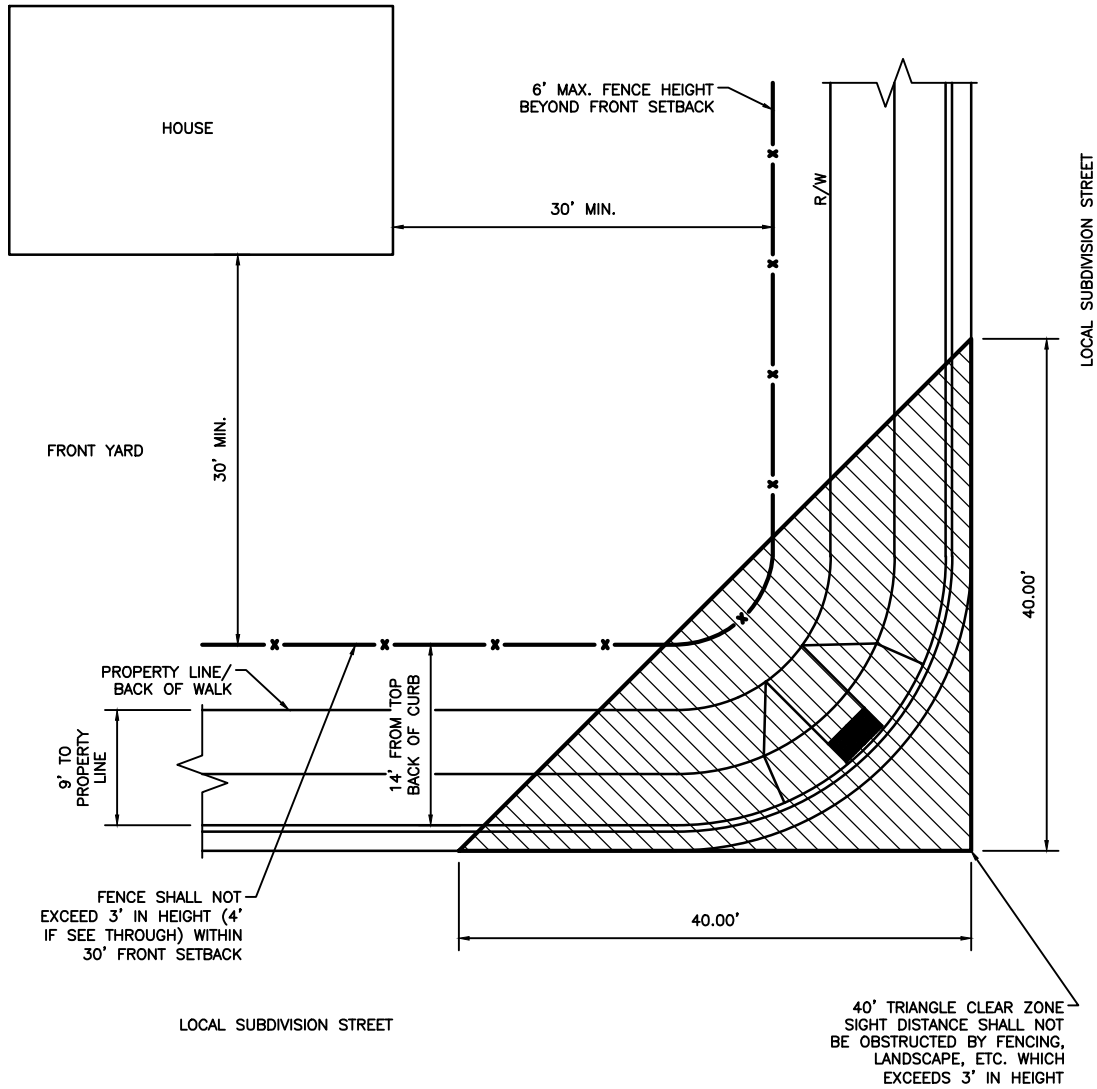
HIGHLAND CITY
PUBLIC WORKS AND ENGINEERING

STOP SIGN DETAIL

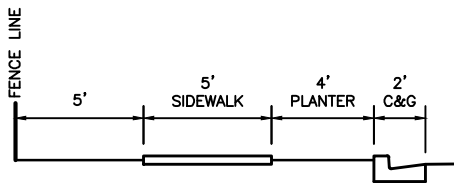
STD DWG #

ST-04

NO. REVISION DESCRIPTION BY APR. DATE LAST UPDATED: 5/6/2021



SIGHT TRIANGLE
SCALE: NTS



TYPICAL CROSS SECTION LOCAL STREETS
SCALE: NTS

Plot Date: 5/11/2021 11:23 AM Plotted By: Mike Burns
Date Created: 5/6/2021 N:\WORKS OFFICE\ENGINEERING DIVISION\AUTOCAD DRAWINGS\HIGHLAND CITY STD DWG\STD\HIGHLAND STD DRAWINGS.DWG

STATEMENT OF USE
THIS DOCUMENT AND ANY ILLUSTRATIONS HEREON ARE PROVIDED AS STANDARD CONSTRUCTION DETAILS WITHIN HIGHLAND CITY. DEVIATION FROM THIS DOCUMENT REQUIRES APPROVAL OF HIGHLAND CITY. HIGHLAND CITY CORP. CAN NOT BE HELD LIABLE FOR MISUSE OR CHANGES REGARDING THIS DOCUMENT.

FILE: HIGHLAND STD DRAWINGS

DRAWN BY: JMM
DESIGN BY: CRW
CHECKED BY: TMT



HIGHLAND CITY
PUBLIC WORKS AND ENGINEERING

SITE TRIANGLE DETAIL

STD DWG #

ST-05

NO.	REVISION DESCRIPTION	BY	APR	DATE	LAST UPDATED: 5/6/2021

GENERAL NOTES:

1. THE PARKWAY IS DESIGNED AS A 29 FOOT WIDE STRIP WITH A 5 FOOT MEANDERING SIDEWALK, LANDSCAPING AND FENCE.
2. THE LENGTH OF THE PARKWAY MAY BE SOD, PLANTED GRASS, OR XERISCAPE. THE PARKWAY PLANTING PLAN AND LAYOUT SHALL BE PROVIDED FOR REVIEW AS A PART OF THE CITY PLAN APPROVAL PROCESS. IF XERISCAPE IS SELECTED, DESIGN SHALL CONFORM TO CITY XERISCAPE STANDARDS. THE TREES WILL BE SPACED AN AVERAGE OF 30 FEET APART AND NO CLOSER THAN 7.5 FEET FROM THE CURB OR THE FENCE. EACH TREE MUST HAVE A 24 INCH CEMENT MOW RING FOR MAINTENANCE. THIS WILL ALLOW FOR MOWING EQUIPMENT TO MANEUVER AROUND TREES.
3. ALL TREES WILL BE AT LEAST 2 INCH CALIPER AND BE PROPERLY STACKED. TREES WILL BE GUARANTEED BY THE DEVELOPER FOR 18 MONTHS AFTER PLANTING. TREE TYPES ARE TO BE APPROVED AS ON THE CITY TREE COMMITTEE LIST. ANY SUBSTITUTES MUST BE APPROVED BY HIGHLAND CITY.
4. THE BACK SIDE OF THE PARKWAY SHALL HAVE A 6 FOOT HIGH QUALITY FENCE CONSTRUCTED OF BRICK, PRE-CAST CONCRETE, WROUGHT IRON, OR BLOCK APPROVED BY THE CITY.
5. SIDEWALK SHOULD BE INSTALLED WITH GRADUAL CURVES IN A RANDOM, LESS STRUCTURED FORMAT.
6. THE ENTRANCE WAYS TO SUBDIVISIONS WILL BE BORDERED BY 20 FOOT BY 15 FOOT PLANTER AREAS WITH NUMEROUS TREES, SHRUB, ROCKS AND GROUND COVER. SUCH ENTRANCE WAYS SHALL CONFORM TO THE CLEAR SIGHT REQUIREMENTS WITH VEGETATION IN THE CLEAR SIGHT ARE NOT CAPABLE OF GROWING OVER 2 FEET IN HEIGHT.

PARKWAY LANDSCAPING DETAIL PLAN

THIS PLAN WILL BE SUBMITTED B THE DEVELOPER AT THE TIME OF PRELIMINARY SUBDIVISION APPROVAL AND WILL INCLUDE THE FOLLOWING:

1. THE PROPOSED LOCATION OF TREES WITH THE EXACT LOCATION TO BE APPROVED BY THE CITY INSPECTOR AT THE TIME OF PLANTING.
2. FENCE DESIGN.
3. SIDEWALK DESIGN.
4. TOPOGRAPHY OF PARKWAY.
5. PLANTER AREA DESIGN.

SPRINKLING SYSTEM

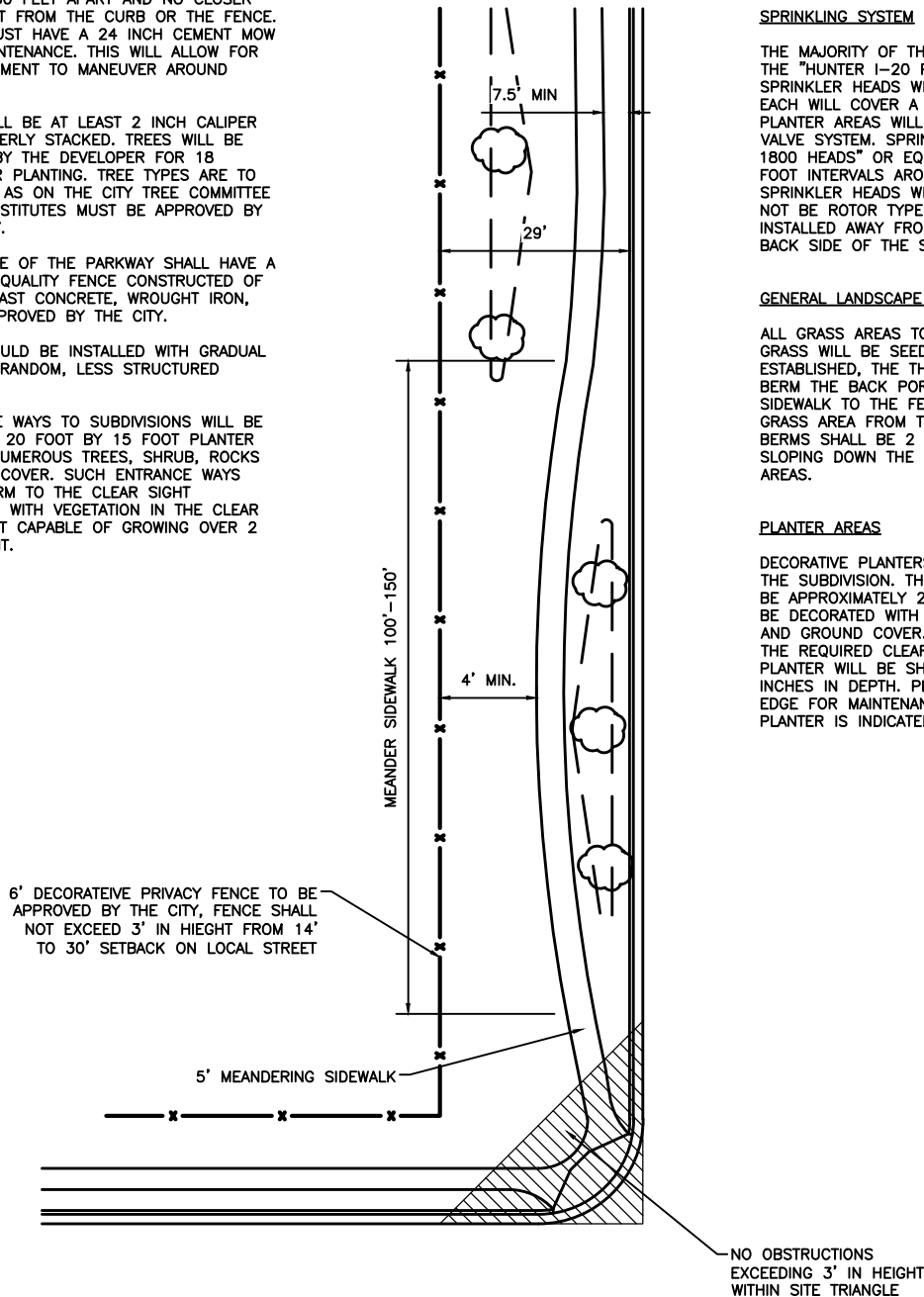
THE MAJORITY OF THE PARKWAY WILL BE WATERED WITH THE "HUNTER 1-20 POP-UP HEAD", OR EQUIVALENT. SPRINKLER HEADS WILL BE SPACED AT 30 FOOT INTERVALS. EACH WILL COVER A 30 FOOT ARC. PLANTER AREAS WILL BE CONTROLLED BY A SEPARATE VALVE SYSTEM. SPRINKLER HEADS WILL BE "RAIN BIRD 1800 HEADS" OR EQUIVALENT. SPACING WILL BE AT 15 FOOT INTERVALS AROUND THE PLANTERS. SPRINKLER HEADS WHICH BACK ONTO THE CURB SHALL NOT BE ROTOR TYPE. ALL VALVE BOXES SHALL BE INSTALLED AWAY FROM THE CURB, PREFERABLY ON THE BACK SIDE OF THE SIDEWALK.

GENERAL LANDSCAPE DESIGN

ALL GRASS AREAS TO BE HYDRO SEEDING OF SOD. THE GRASS WILL BE SEEDING FIRST AND AFTER GROWTH IS ESTABLISHED, THE TREES WILL BE PLANTED. BERM THE BACK PORTION OF THE GRASS AREA FROM THE SIDEWALK TO THE FENCE AND FRONT PORTION OF THE GRASS AREA FROM THE SIDEWALK TO THE CURB. THE BERMS SHALL BE 2 FEET HIGH IN THE WIDE AREAS AND SLOPING DOWN THE RELATIVELY FLAT BERM IN THE NARROW AREAS.

PLANTER AREAS

DECORATIVE PLANTERS ARE PLANNED AT ALL ENTRANCES TO THE SUBDIVISION. THE BASIC SIZE OF THE PLANTERS WILL BE APPROXIMATELY 20 FOOT BY 15 FOOT AND EACH WILL BE DECORATED WITH A VARIETY OF TREES, SHRUBS, ROCKS, AND GROUND COVER. VEGETATION MAY NOT INFRINGE ON THE REQUIRED CLEAR AREA. GROUND COVER WITHIN THE PLANTER WILL BE SHREDDED BARK APPROXIMATELY 2 INCHES IN DEPTH. PLANTERS MUST HAVE A CEMENT MOW EDGE FOR MAINTENANCE. THE SUGGESTED DESIGN OF THE PLANTER IS INDICATED IN THE OUTLINE SPECIFIED ABOVE.



STATEMENT OF USE

THIS DOCUMENT AND ANY ILLUSTRATIONS HEREON ARE PROVIDED AS STANDARD CONSTRUCTION DETAILS WITHIN HIGHLAND CITY. DEVIATION FROM THIS DOCUMENT REQUIRES APPROVAL OF HIGHLAND CITY. HIGHLAND CITY CORP. CAN NOT BE HELD LIABLE FOR MISUSE OR CHANGES REGARDING THIS DOCUMENT.

FILE: HIGHLAND STD DRAWINGS

DRAWN BY: JMM
DESIGN BY: CRW
CHECKED BY: TMT



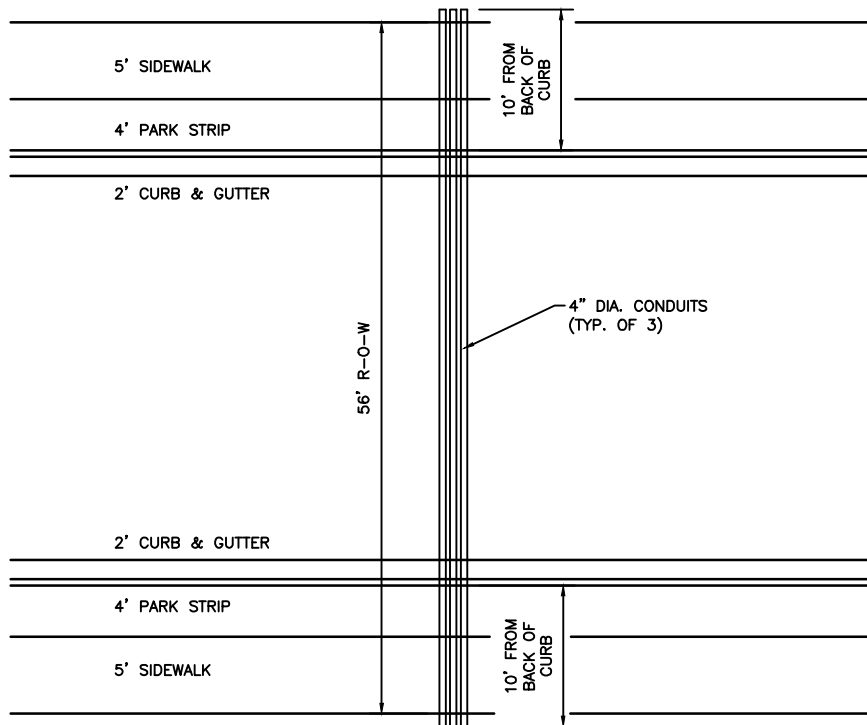
HIGHLAND CITY
PUBLIC WORKS AND ENGINEERING

STD DWG #

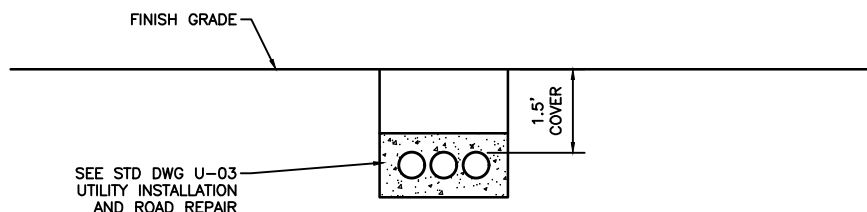
ST-06

NO REVISION DESCRIPTION BY APR DATE LAST UPDATED: 11/2/2021

PARKWAY LANDSCAPE DETAIL



PLAN VIEW
SCALE: NTS



CROSS SECTION
SCALE: NTS

NOTES:

1. ALL CONDUITS SHALL BE 4" DIA. SCH. 40, GREY PVC.
2. ALL CONDUITS SHALL BE BEDDED IN $\frac{3}{4}$ " MATERIAL, WITH 1.5' OF COVER FROM FINISH GRADE.
3. THE ENDS OF EACH CONDUIT SHALL BE TAPED OR CAPPED TO PREVENT DIRT FROM ENTERING.
4. ALL CONDUITS SHALL BE SURROUNDED BY A MIN. 4" THICKNESS OF $\frac{3}{4}$ " MINUS MATERIAL.
5. PULL WIRE REQUIRED.
6. CONDUIT SHALL BE INSTALLED ACROSS EACH LEG AT INTERSECTIONS, AT BULB OF CUL-DE-SAC, AND EVERY 300 FEET.

Plot Date: 5/11/2021 11:44 AM Plotted By: Mike Burns
Date Created: 5/6/2021 N:\WORKS OFFICE\ENGINEERING DIVISION\AUTOCAD DRAWINGS\HIGHLAND CITY STD DWGS\CAD\HIGHLAND STD DRAWINGS.DWG

STATEMENT OF USE
THIS DOCUMENT AND ANY ILLUSTRATIONS HEREON ARE PROVIDED AS STANDARD CONSTRUCTION DETAILS WITHIN HIGHLAND CITY. DEVIATION FROM THIS DOCUMENT REQUIRES APPROVAL OF HIGHLAND CITY. HIGHLAND CITY CORP. CAN NOT BE HELD LIABLE FOR MISUSE OR CHANGES REGARDING THIS DOCUMENT.

FILE: HIGHLAND STD DRAWINGS
DRAWN BY: JMM
DESIGN BY: CRW
CHECKED BY: TMT



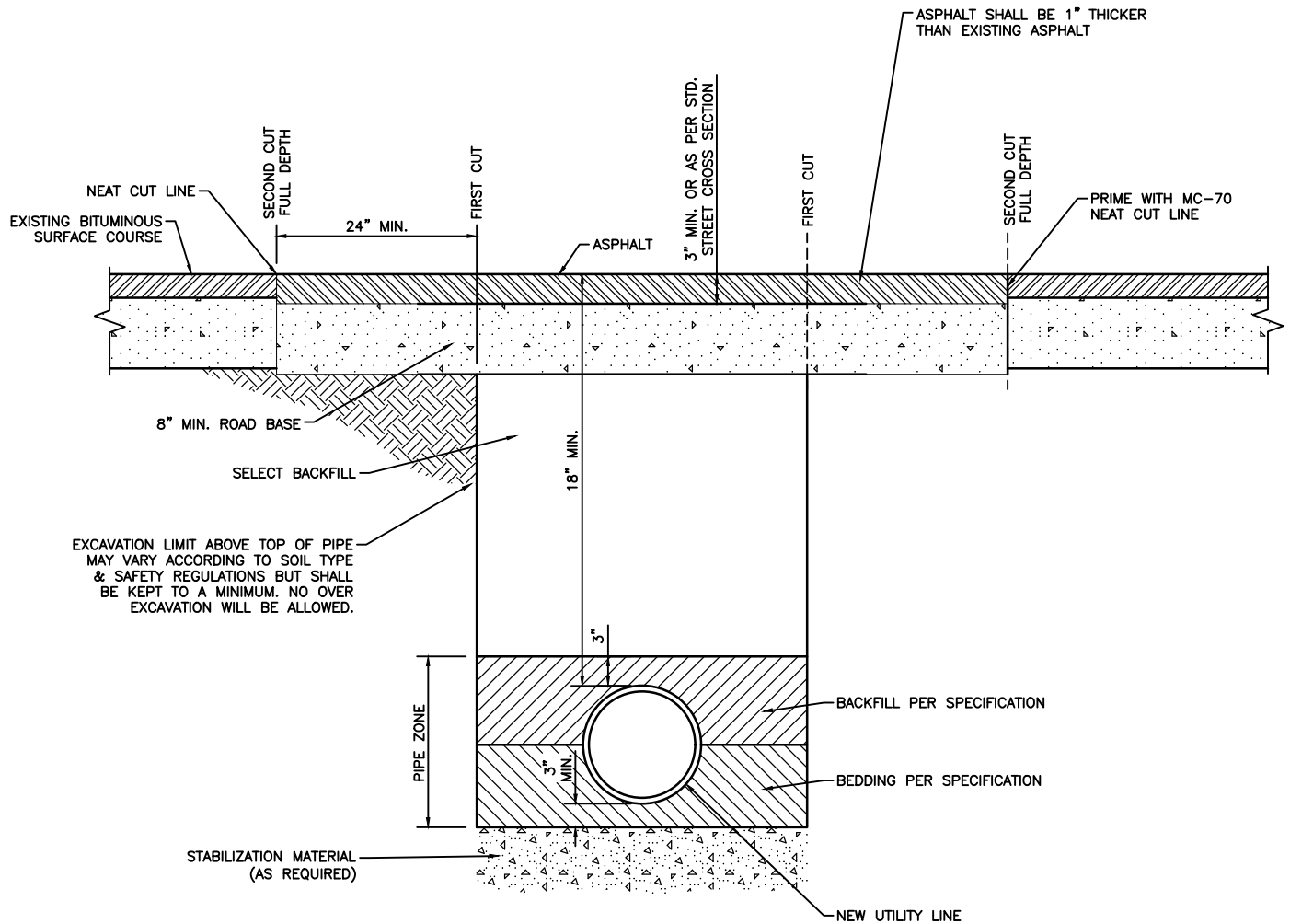
HIGHLAND CITY
PUBLIC WORKS AND ENGINEERING

CONDUIT BANK DETAIL

STD DWG #

U-02

NO.	REVISION DESCRIPTION	BY	APR	DATE	LAST UPDATED: 5/6/2021



NOTE:

1. NO SAW CUT JOINT SHALL BE IN THE TIRE PATH. IF PATCH JOINT ENDS WITHIN 2' OF CURB, PATCH MUST GO TO CURB.
2. USE APWA AS GUIDE (PLAN # 255).
3. PG 58-28 PERFORMANCE GRADED ASPHALT.

Plot Date: 5/11/2021 11:46 AM Plotted By: Mike Burns
 Date Created: 5/6/2021 N:\WORKS OFFICE\ENGINEERING DIVISION\AUTOCAD DRAWINGS\HIGHLAND CITY STD DWG\STD\HIGHLAND STD DRAWINGS.DWG

STATEMENT OF USE
 THIS DOCUMENT AND ANY ILLUSTRATIONS HEREON ARE PROVIDED AS STANDARD CONSTRUCTION DETAILS WITHIN HIGHLAND CITY. DEVIATION FROM THIS DOCUMENT REQUIRES APPROVAL OF HIGHLAND CITY. HIGHLAND CITY CORP. CAN NOT BE HELD LIABLE FOR MISUSE OR CHANGES REGARDING THIS DOCUMENT.

FILE: HIGHLAND STD DRAWINGS

DRAWN BY: JMM
 DESIGN BY: CRW
 CHECKED BY: TMT



HIGHLAND CITY
 PUBLIC WORKS AND ENGINEERING

UTILITY TRENCH CROSS SECTION

STD DWG #

U-03

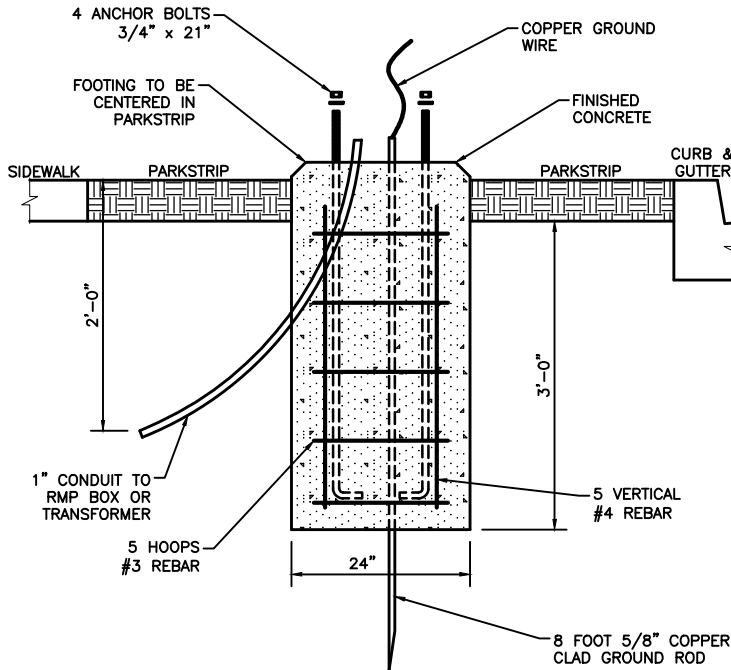
NO.	REVISION DESCRIPTION	BY	DATE	LAST UPDATED: 5/6/2021

NOTES:

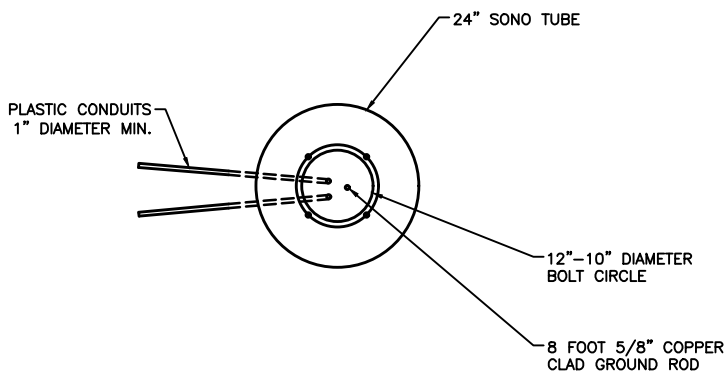
1. ALL LIGHTS SHALL BE 120V.
2. WIRE NUT, 10-12, BLUE, WET LOCATION TYPE WITH SILICONE INSIDE.
3. GROUND CONNECTOR.
4. CONDUCTOR, 8'⁵/₈" SOLID, CU, BARE SOFT DRAWN.
5. IN-LINE FUSE HOLDER, URD, INSULATED ENDS.
6. FUSE, 10A 600 V KTK, FNM, OR EQUIVALENT.
7. JUNCTION BOX, UNDERGROUND, STREET LIGHT, SMALL PLASTIC, FOR NO OR LOW TRAFFIC AREA. * BOX SHOULD BE PLACED AT GRADE LEVEL, AS CLOSE TO BASE AS POSSIBLE.
8. JUNCTION BOX, UNDERGROUND, POLYMER CONCRETE COVER OR CONCRETE BOX WITH STEEL COVER, TO BE USED IN HIGH TRAFFIC AREAS. * BOX SHOULD BE PLACED AT GRADE LEVEL, AS CLOSE TO BASE OF POLE AS POSSIBLE NOT IN SIDEWALK OR CURB. ** CONCRETE BOX WITH STEEL COVER TO BE USED FOR ROADWAY OR VERY HIGH TRAFFIC AREAS.
9. CLAMP, GROUND ROD, 5/8"x8' COPPER WELD/BONDED CU.
10. MOW STRIP, MADE OF CONCRETE, 24" SONO TUBE FORM, TYPICALLY 2"-4" WIDER THAN BASE OF POLE, FILLED WITH READY MIX CONCRETE AND LEVELED TO BASE OF POLE, WITH #4 REBAR RING IN MIDDLE DEPTH. * MOW STRIP AROUND LIGHT POLES IS TO PROTECT AGAINST DAMAGE FROM EDGE TRIMMERS, 2" ABOVE TBC.
11. HELIX FOUNDATION LIGHT POLES SHALL NOT BE PERMITTED IN HIGHLAND CITY FOR THE POLES.
12. ALL CONTRACTORS INSTALLING LIGHT POLES IN HIGHLAND SHALL BE RESPONSIBLE FOR COORDINATION WITH ROCKY MOUNTAIN POWER AND HIGHLAND CITY WITH AS-BUILT PLANS SO THEY WILL BE INCORPORATED WITH BLUE STAKES FOR IDENTIFICATION, PROOF OF COMPLETION WILL BE REQUIRED BEFORE POLES ARE SIGNED OFF.
13. UNDERGROUND WIRING FOR STREET LIGHTING SHALL BE INSTALLED AS PER NEC, BURIED AT A MINIMUM DEPTH OF 18" WHEN INSTALLED WITH DIRECT BURIAL CABLE FROM POWER SOURCE, DIRECT BURY CABLE SHALL BE INSTALLED PERPENDICULAR TO CURB AND THEN RUNNING PARALLEL WITH CURB TO STREETLIGHT, WITH PLACEMENT OF WIRE A MAXIMUM DISTANCE OF 8" FROM TBC.
14. TYPE OF UNDERGROUND CABLE FOR STREET LIGHTING SHALL ALSO BE NEC APPROVED COPPER #6 OR #8 LISTED FOR DIRECT BURIAL USE.
15. A JUNCTION BOX SHALL BE INSTALLED WITH A BREAKAWAY FUSE AS CLOSE AS POSSIBLE TO BASE OF POLE.
16. ALL WIRING RUNNING FROM POWER SOURCE TO LIGHT NEEDS TO BE PLACED WITHIN A RECORDED EASEMENT SO THE CITY CAN MAINTAIN THEM.

NOTES:

1. THREE WIRE COPPER CONDUCTOR (8-3/C TYPE TC 600V VNTC SUN RES DIR BUR METHOD 4 CABLE OR EQUIVALENT) SHALL BE USED ON SINGLE POLE INSTALLATIONS (1-BLACK 2-WHITE 3-GREEN)--COPPER CABLE ONLY--.
2. WIRE CONNECTORS IN HAND HOLE SHALL BE MADE BURNDY YCBL12 ELECTRICAL CONNECTORS, HSTO 4-48-5 HEAT SHRINK OR EQUIVALENT SHALL BE USED TO COMPLETE WIRE CONNECTIONS.
3. BURNDY KA25U 14-1/0 AWG AL/CU MECHANICAL LUGS OR EQUIVALENT SHALL BE USED TO CONNECT THE GROUND WIRE TO THE GROUND CLIP INSIDE THE HAND HOLE.
4. A GOULD SHAWMUT IN LINE FUSE HOLDER WITH/ BOOT #GEB-11-11-B AND AMP OTMIS GOULD FUSE OR EQUIVALENT SHALL BE INSTALLED INSIDE THE JUNCTION BOX OR TRANSFORMER CONNECTION TO THE HOT LEG OF THE POWER CABLE, SHALL BE CORRELATED BETWEEN CONTRACTORS AND ROCKY MOUNTAIN POWER.
5. STREET LIGHT POLE SHALL NOT BE INSTALLED IN A MANNER THAT WILL HINDER THE OPERATION OF FIRE HYDRANTS OR UNDERGROUND WATER SYSTEM ISOLATION VALVES.
6. INSTALLATIONS WITHIN CLOSE PROXIMITY TO TREES SHALL BE AVOIDED UNLESS APPROVED BY THE PROJECT MANAGER.
7. ALL WIRE WHICH IS INSTALLED UNDER SIDEWALK, DRIVEWAYS, OR OTHER PERMANENT STRUCTURES ARE REQUIRED TO BE PLACED IN CONDUIT.
8. POLE IS TO BE SET PLUMB. THE POLE SHALL BE INSTALLED WITHIN 1/4 DEGREE OF VERTICAL.



LIGHT POLE DETAIL
SCALE: NTS



NOTE:

1. GROUND ROD AND PLASTIC CONDUITS MUST BE LOCATED WITHIN A 3" RADIUS FROM THE CENTER OF BOLT CIRCLE.
2. ALL WIRES TO BE RUN IN 1" CONDUIT FROM LIGHT BASE TO POWER SOURCE.

PLAN VIEW
SCALE: NTS

STATEMENT OF USE

THIS DOCUMENT AND ANY ILLUSTRATIONS HEREON ARE PROVIDED AS STANDARD CONSTRUCTION DETAILS WITHIN HIGHLAND CITY. DEVIATION FROM THIS DOCUMENT REQUIRES APPROVAL OF HIGHLAND CITY. HIGHLAND CITY CORP. CAN NOT BE HELD LIABLE FOR MISUSE OR CHANGES REGARDING THIS DOCUMENT.

FILE: HIGHLAND STD DRAWINGS

DRAWN BY: JMM
DESIGN BY: CRW
CHECKED BY: TMT



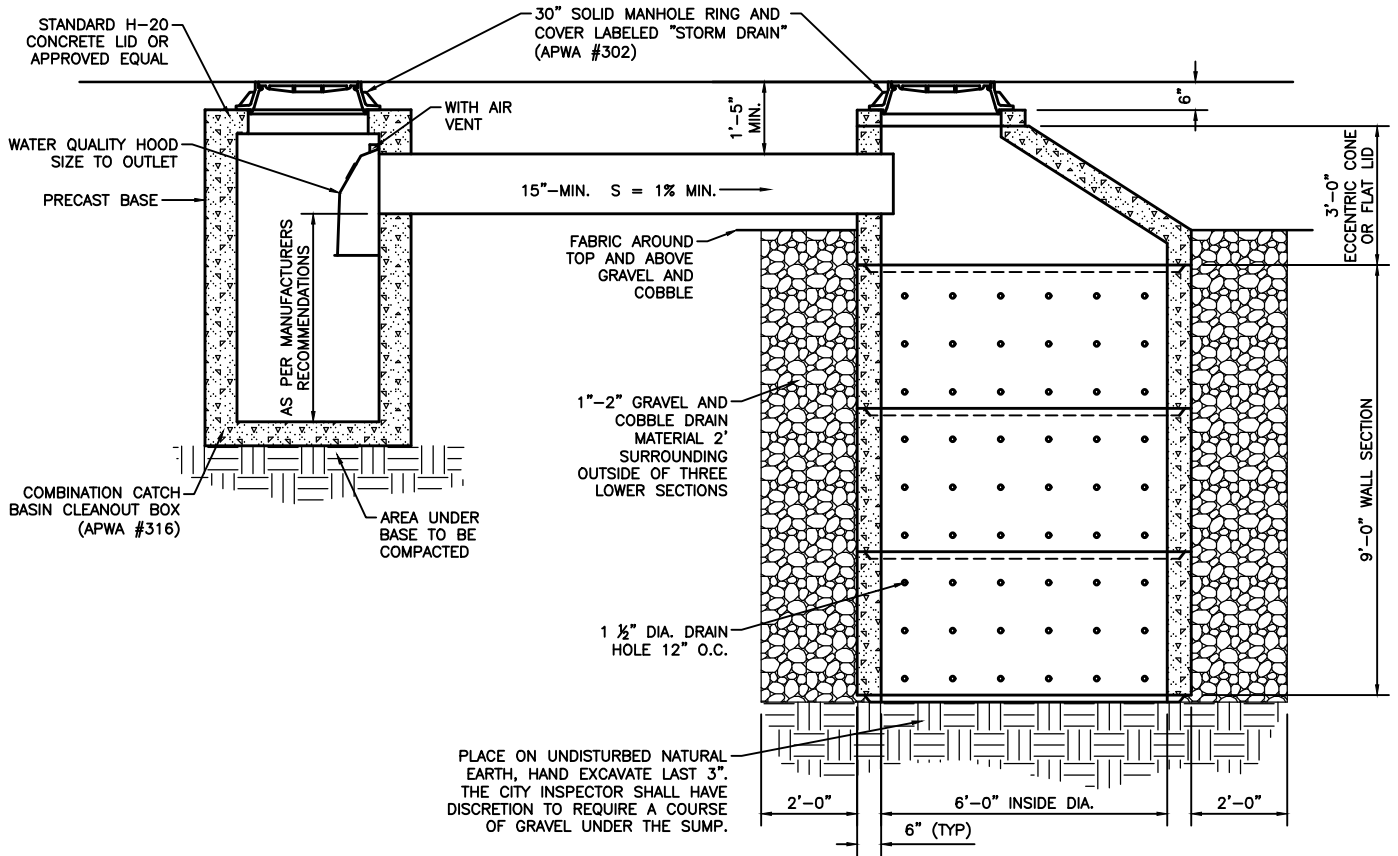
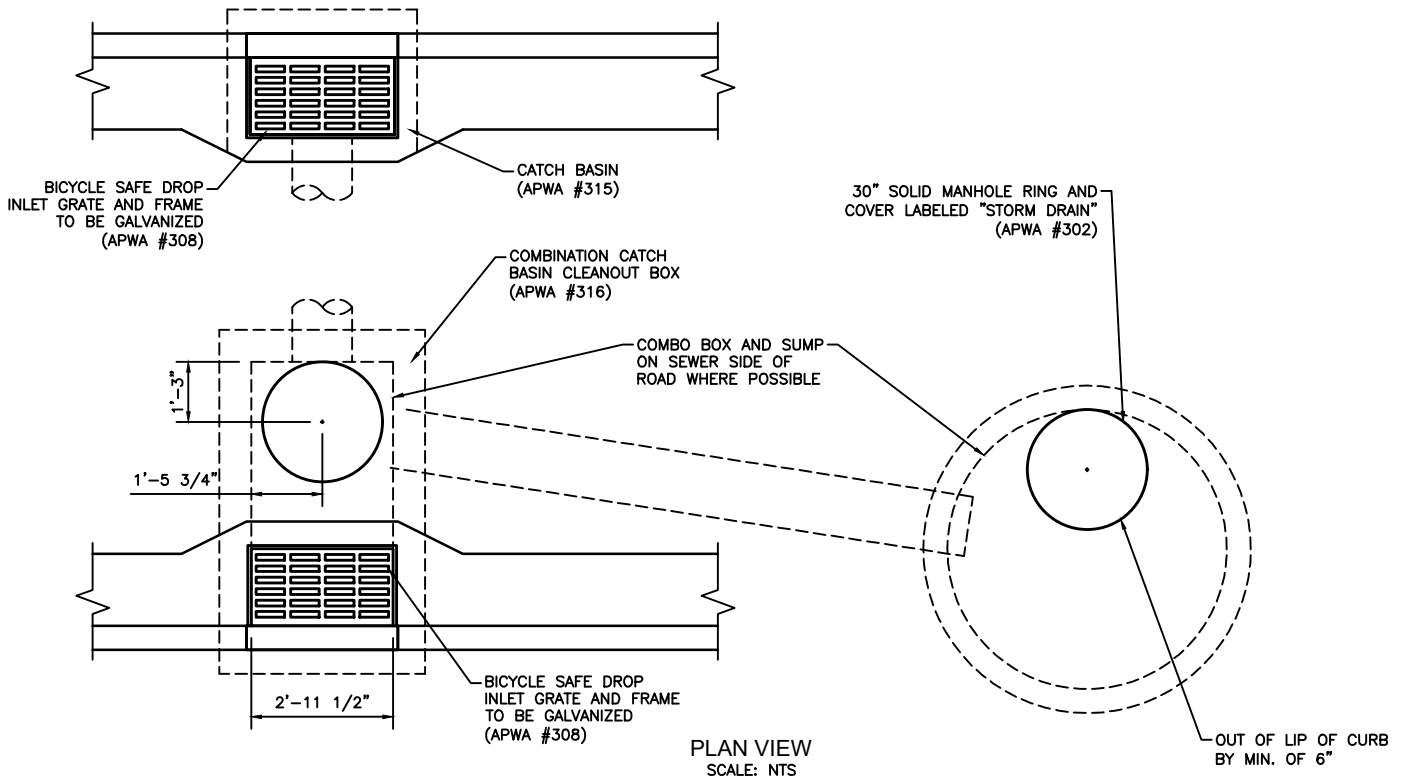
HIGHLAND CITY
PUBLIC WORKS AND ENGINEERING

STREET LIGHT BASE DETAIL

STD DWG #

U-04

NO.	REVISION DESCRIPTION	BY	DATE	LAST UPDATED: 5/6/2021
-----	----------------------	----	------	------------------------



SUMP CROSS SECTION
SCALE: NTS

Plot Date: 5/11/2021 11:46 AM Plotted By: Mike Burns
Date Created: 5/6/2021 N:\WORKS OFFICE\ENGINEERING DIVISION\AUTOCAD DRAWINGS\HIGHLAND CITY STD DWG\STD\HIGHLAND STD DRAWINGS.DWG

STATEMENT OF USE
THIS DOCUMENT AND ANY ILLUSTRATIONS HEREON ARE PROVIDED AS STANDARD CONSTRUCTION DETAILS WITHIN HIGHLAND CITY. DEVIATION FROM THIS DOCUMENT REQUIRES APPROVAL OF HIGHLAND CITY. HIGHLAND CITY CORP. CAN NOT BE HELD LIABLE FOR MISUSE OR CHANGES REGARDING THIS DOCUMENT.

FILE: HIGHLAND STD DRAWINGS

DRAWN BY: JMM
DESIGN BY: CRW
CHECKED BY: TMT



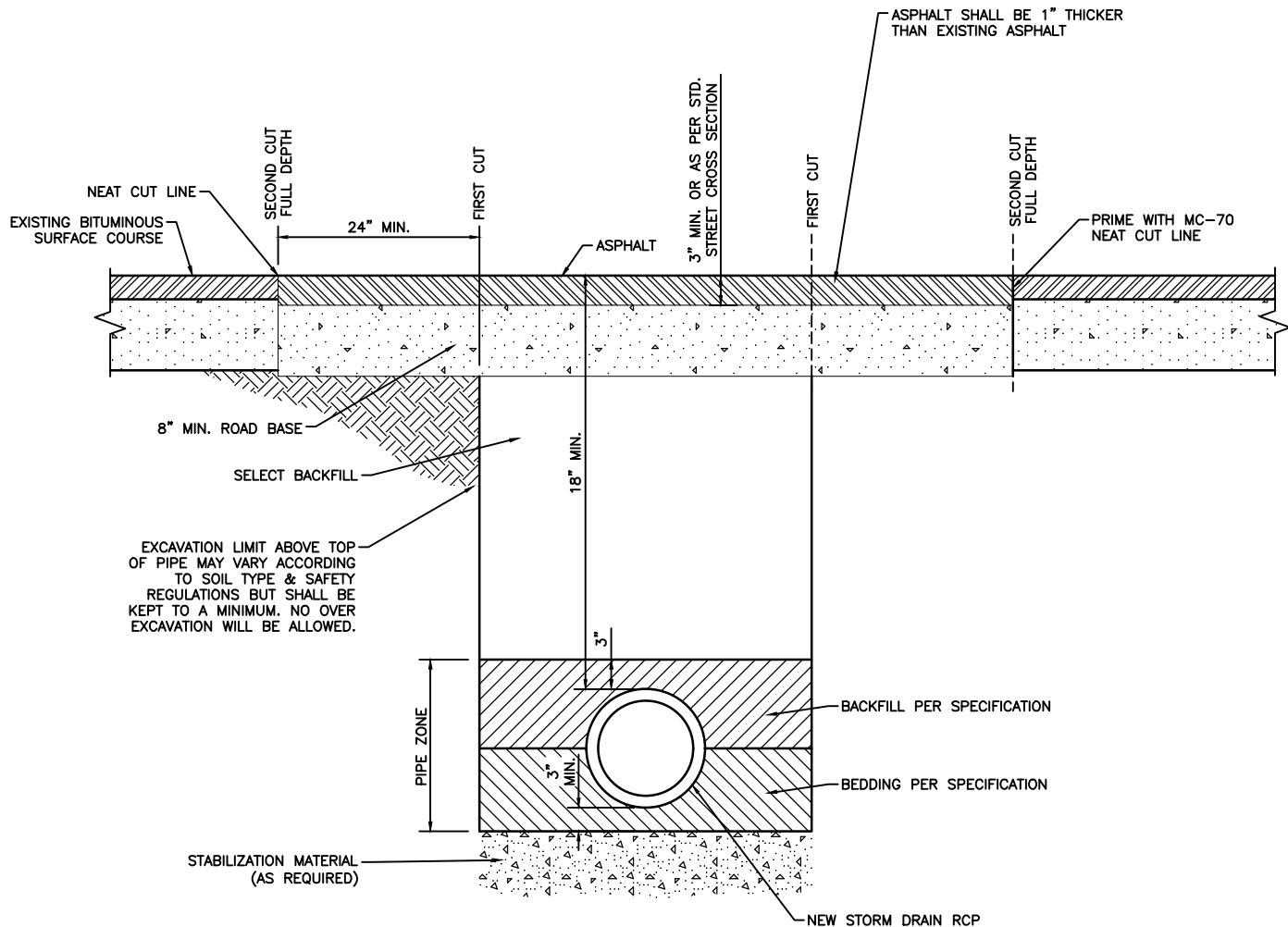
HIGHLAND CITY
PUBLIC WORKS AND ENGINEERING

STORM DRAIN AND SUMP DETAIL

STD DWG #

SD-01

NO.	REVISION DESCRIPTION	BY	DATE	LAST UPDATED: 5/6/2021



NOTE:

1. NO SAW CUT JOINT SHALL BE IN THE TIRE PATH. IF PATCH JOINT ENDS WITHIN 2' OF CURB, PATCH MUST GO TO CURB.
2. USE APWA AS GUIDE (PLAN # 255).
3. PG 58-28 PERFORMANCE GRADED ASPHALT.

Plot Date: 5/11/2021 11:46 AM Plotted By: Mike Burns
Date Created: 5/6/2021 N:\WORKS OFFICE\ENGINEERING DIVISION\AUTOCAD DRAWINGS\HIGHLAND CITY STD DWGS\CAD\HIGHLAND STD DRAWINGS.DWG

STATEMENT OF USE
THIS DOCUMENT AND ANY ILLUSTRATIONS HEREON ARE PROVIDED AS STANDARD CONSTRUCTION DETAILS WITHIN HIGHLAND CITY. DEVIATION FROM THIS DOCUMENT REQUIRES APPROVAL OF HIGHLAND CITY. HIGHLAND CITY CORP. CAN NOT BE HELD LIABLE FOR MISUSE OR CHANGES REGARDING THIS DOCUMENT.

FILE: HIGHLAND STD DRAWINGS

DRAWN BY: JMM
DESIGN BY: CRW
CHECKED BY: TMT



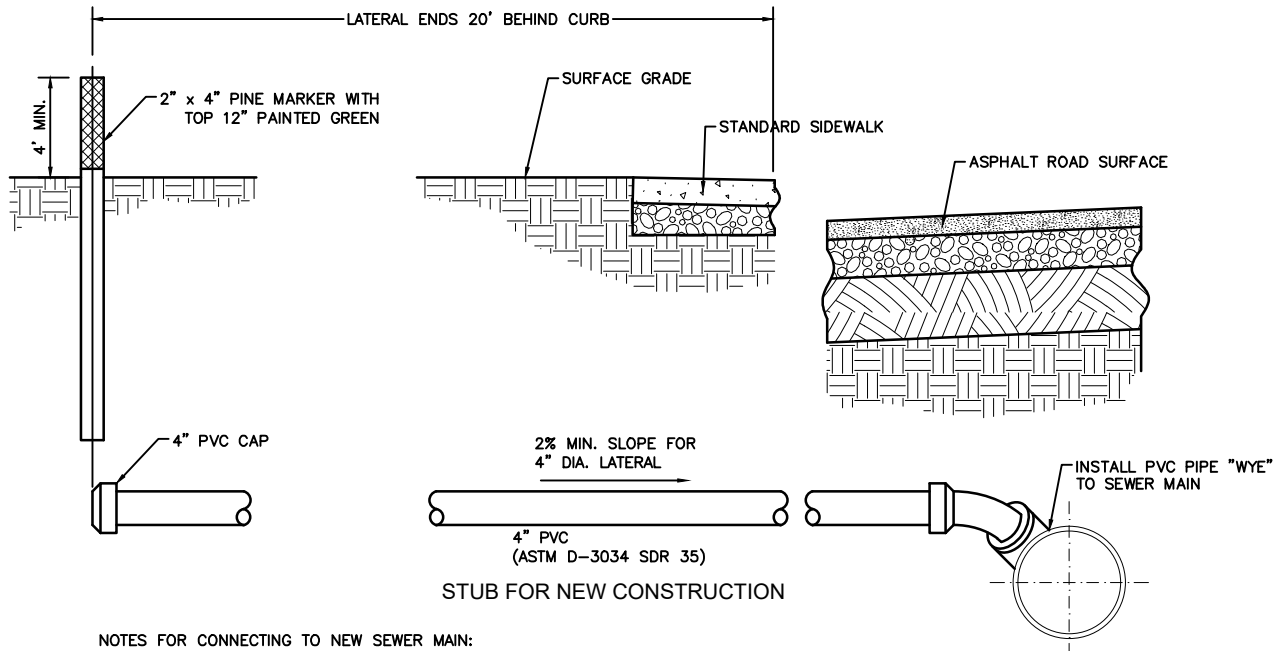
HIGHLAND CITY
PUBLIC WORKS AND ENGINEERING

STORM DRAIN TRENCH CROSS SECTION

STD DWG #

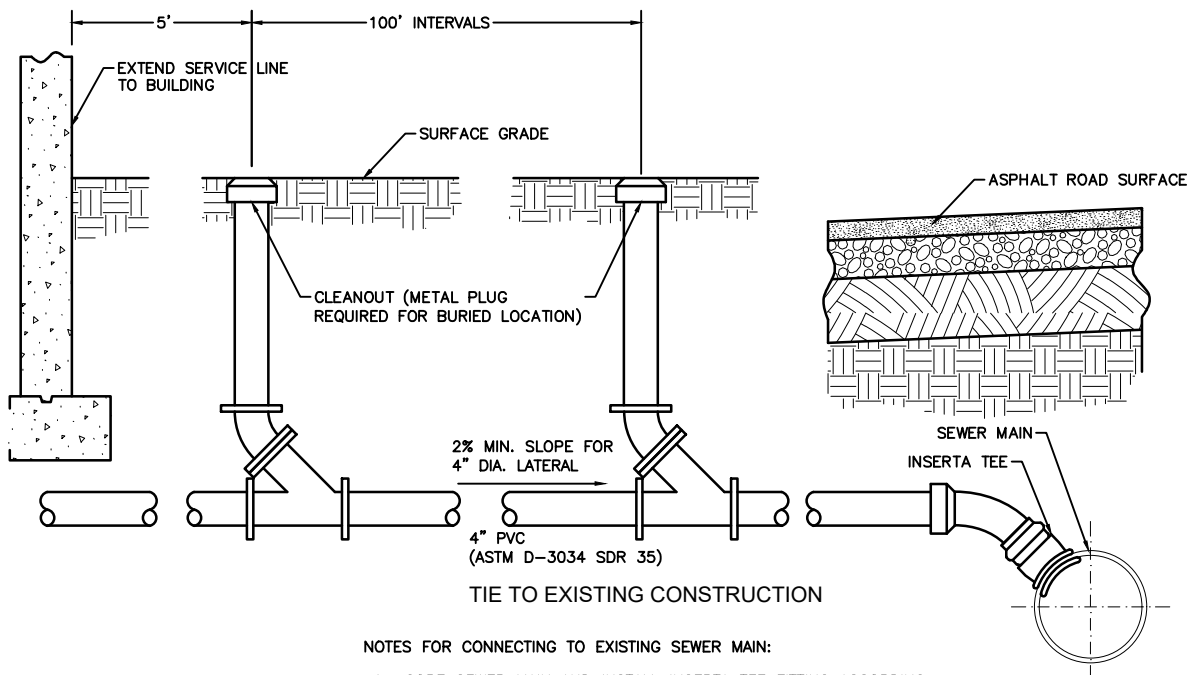
SD-02

NO.	REVISION DESCRIPTION	BY	APR	DATE	LAST UPDATED: 5/6/2021



NOTES FOR CONNECTING TO NEW SEWER MAIN:

1. SANITARY SEWER SERVICE TAPS SHALL BE LOCATED ON THE MAIN AT THE 2 O'CLOCK OR 10 O'CLOCK POSITION.
2. THE MINIMUM DISTANCE BETWEEN ANY TWO CONSECUTIVE FITTINGS SHALL BE 3 FEET, MEASURED BETWEEN FITTING CENTERLINES.
3. SANITARY SEWER SERVICE TAPS SHALL NOT BE MADE WITHIN 3 FEET OF A PIPE JOINT, OR 5 FEET FROM EDGE OF MANHOLE BASE.
4. A MAXIMUM OF FOUR SERVICE TAPS ARE ALLOWED PER 20 FOOT LENGTH OF PIPE.
5. ALL SANITARY SEWER TAPS SHALL USE "WYE" STYLE FITTINGS. TEES ARE NOT ALLOWED.
6. LATERAL SHALL NOT ENTER MANHOLES, UNLESS APPROVED BY CITY ENGINEER AND CITY PUBLIC WORKS DEP.
7. AN APPROVED PVC "WYE" SHALL BE USED ON NEW MAIN LINE INSTALLATIONS 18" OR SMALLER.
8. TAPS INSTALLED IN STAGGERED CONFIGURATION AT 2 O'CLOCK OR 10 O'CLOCK POSITION.



NOTES FOR CONNECTING TO EXISTING SEWER MAIN:

1. CORE SEWER MAIN AND INSTALL INSERTA TEE FITTING ACCORDING TO MANUFACTURER'S RECOMMENDATIONS.
2. CONNECTION TO BE MADE IN PRESENCE OF PUBLIC WORKS INSPECTOR.

Plot Date: 5/11/2021 11:47 AM Plotted By: Mike Burns
 Date Created: 5/6/2021 N:\WORKS OFFICE\ENGINEERING DIVISION\AUTOCAD DRAWINGS\HIGHLAND CITY STD DWGS\CAD\HIGHLAND STD DRAWINGS.DWG

STATEMENT OF USE
 THIS DOCUMENT AND ANY ILLUSTRATIONS HEREON ARE PROVIDED AS STANDARD CONSTRUCTION DETAILS WITHIN HIGHLAND CITY. DEVIATION FROM THIS DOCUMENT REQUIRES APPROVAL OF HIGHLAND CITY. HIGHLAND CITY CORP. CAN NOT BE HELD LIABLE FOR MISUSE OR CHANGES REGARDING THIS DOCUMENT.

FILE: HIGHLAND STD DRAWINGS

DRAWN BY: JMM
 DESIGN BY: CRW
 CHECKED BY: TMT



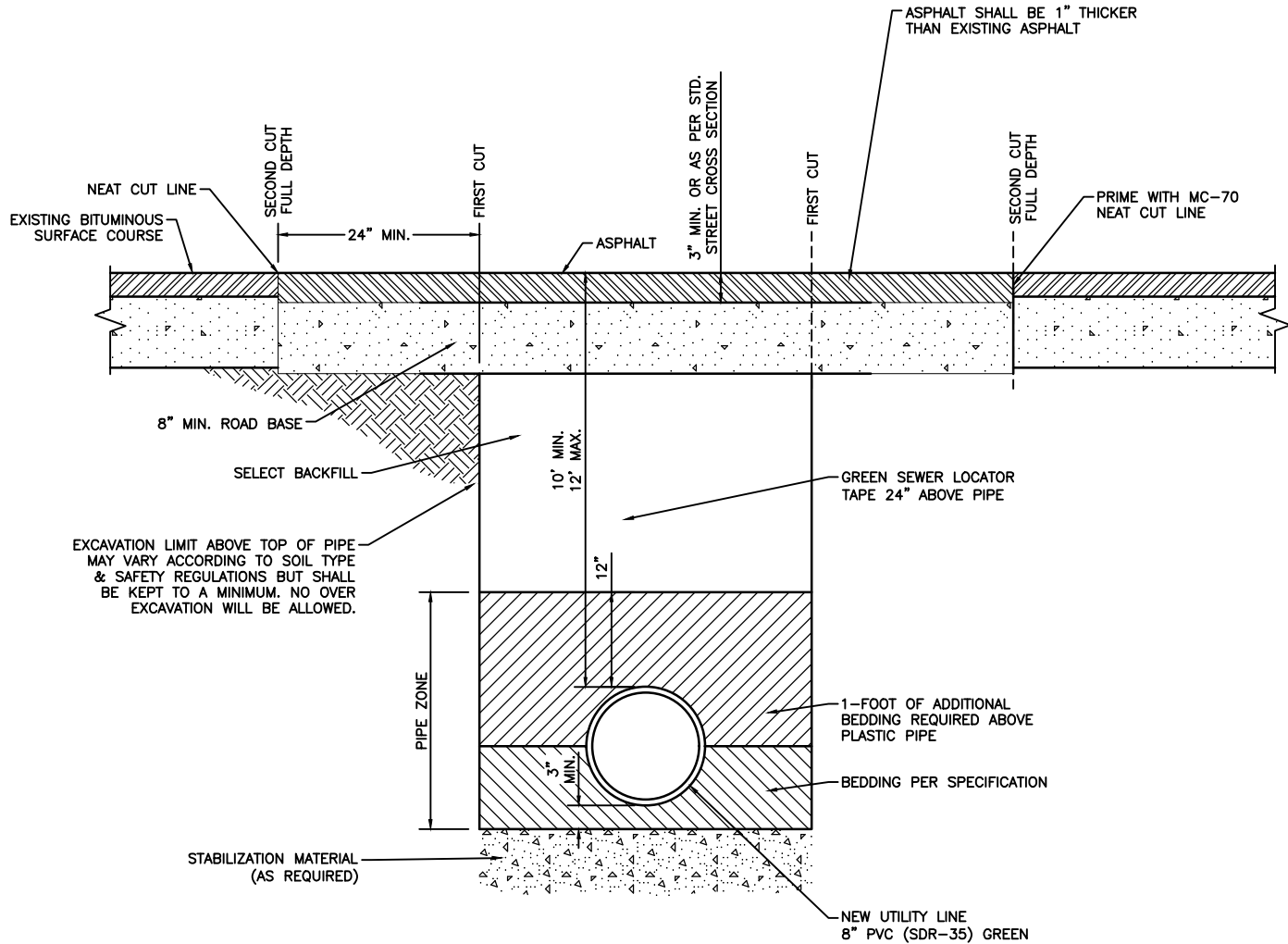
HIGHLAND CITY
 PUBLIC WORKS AND ENGINEERING

SEWER LATERAL DETAIL

STD DWG #

SS-01

NO.	REVISION DESCRIPTION	BY	APR	DATE	LAST UPDATED: 5/6/2021



NOTE:

1. USE APWA AS GUIDE.
2. PG 58-28 PERFORMANCE GRADED ASPHALT.

Plot Date: 5/11/2021 4:43 PM Plotted By: Mike Burns

Date Created: 5/11/2021 N:\WORKS\OFFICE\ENGINEERING\DIVISION\AUTOCAD DRAWINGS\HIGHLAND CITY STD DWGS\HIGHLAND CITY STD DWGS\CAD\HIGHLAND STD DRAWINGS.DWG

STATEMENT OF USE
THIS DOCUMENT AND ANY ILLUSTRATIONS HEREON ARE PROVIDED AS STANDARD CONSTRUCTION DETAILS WITHIN HIGHLAND CITY. DEVIATION FROM THIS DOCUMENT REQUIRES APPROVAL OF HIGHLAND CITY. HIGHLAND CITY CORP. CAN NOT BE HELD LIABLE FOR MISUSE OR CHANGES REGARDING THIS DOCUMENT.

FILE: HIGHLAND STD DRAWINGS

DRAWN BY: JMM
DESIGN BY: CRW
CHECKED BY: TMT



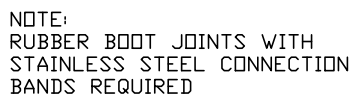
**HIGHLAND CITY
PUBLIC WORKS AND ENGINEERING**

SEWER INSTALLATION AND ROAD REPAIR

STD DWG #

SS-02

NO.	REVISION DESCRIPTION	BY	APR	DATE	LAST UPDATED: 5/11/2021



STATEMENT OF USE
THIS DOCUMENT AND ANY ILLUSTRATIONS HEREON ARE PROVIDED AS
STANDARD CONSTRUCTION DETAILS WITHIN HIGHLAND CITY. DEVIATION
FROM THIS DOCUMENT REQUIRES APPROVAL OF HIGHLAND CITY.
HIGHLAND CITY CORP. CAN NOT BE HELD LIABLE FOR MISUSE OR
CHANGES REGARDING THIS DOCUMENT.

CHECKED BY: ##

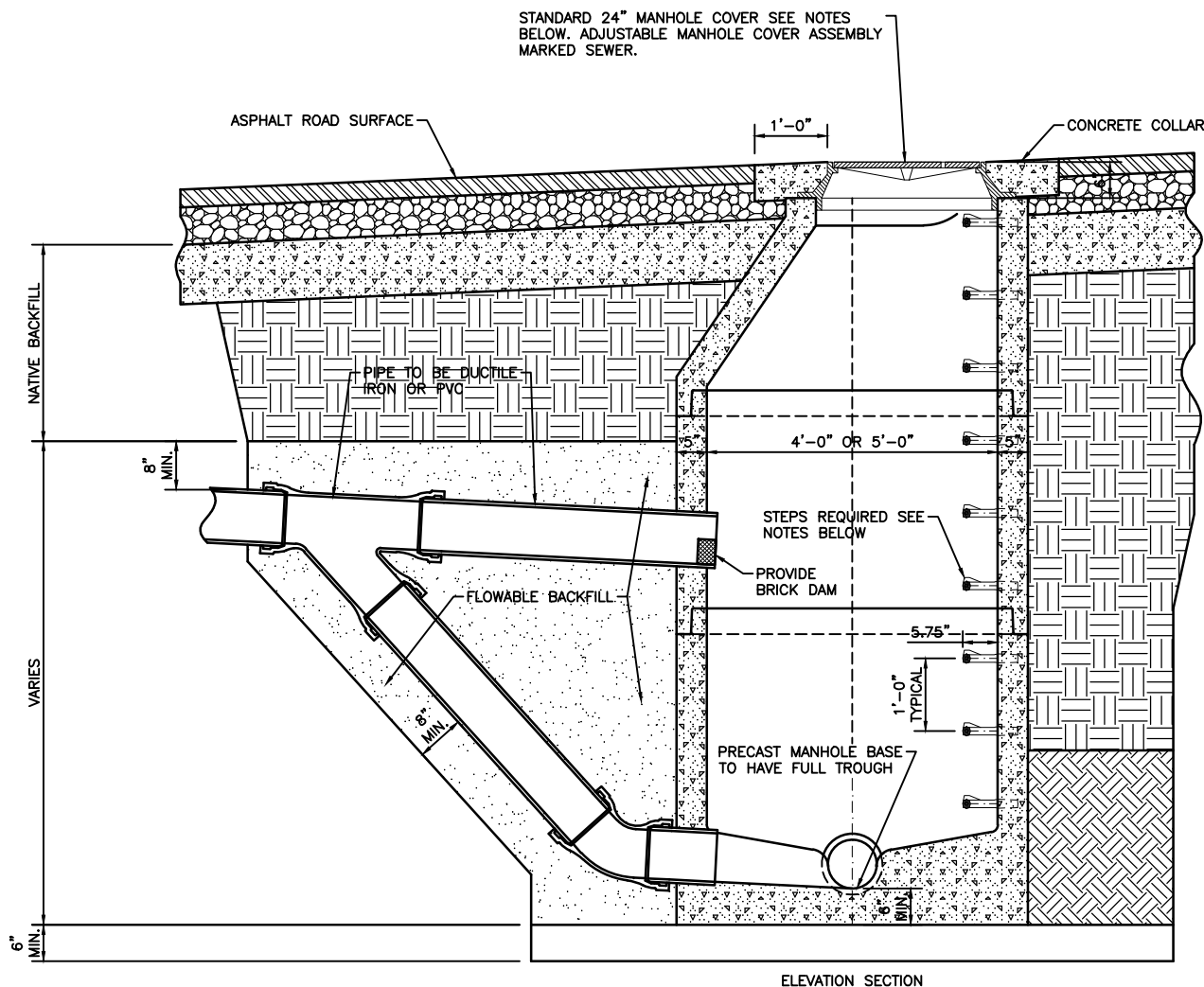
LAST UPDATED: 5/11/2021



SEWER MANHOLE

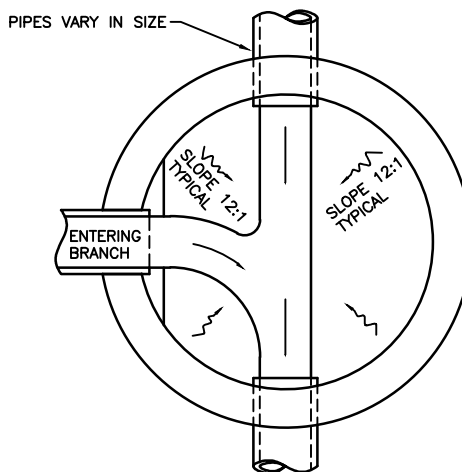
SS-03

NO.	REVISION DESCRIPTION	BY	APP.	DATE
-----	----------------------	----	------	------



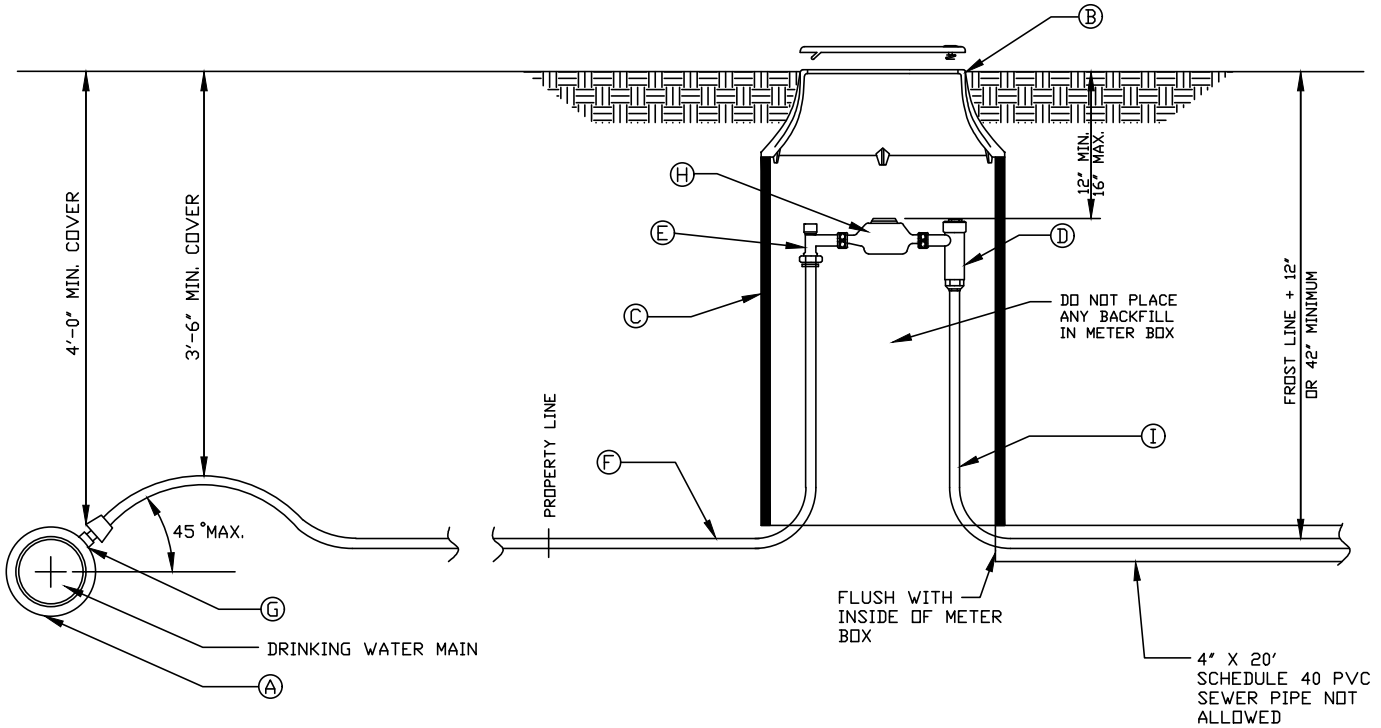
NOTE:

1. USE OF DROP MANHOLES ONLY AS APPROVED BY HIGHLAND CITY ENGINEER AND CITY PUBLIC WORKS DIRECTOR. DROP MANHOLES MAY BE REQUIRED FOR SEWERS ENTERING 24" OR MORE ABOVE THE INVERT OF THE MANHOLE.
2. MANHOLE COVER TO CONTAIN ONE PICK HOLE. SEE SPECIFICATION DIVISION 5 FOR COVER LABEL. D&L SUPPLY P/N A-1180 (OR EQUAL)
3. STEPS SHALL BE MADE OF COPOLYMER POLYPROPYLENE CONFORMING TO ASTM D-4101 REINFORCING STEEL TO BE DEFORMED 1/2" DIAMETER GRADE 60 ROD.
4. FLAT LIDS MAY BE USED IN LIEU OF ECCENTRIC CONES WHERE NECESSARY. FLAT LIDS SHALL BE OF ECCENTRIC DESIGN AND MEET H20 LIVE LOADING. NO FLAT RING AND COVERS WILL BE ALLOWED UNLESS APPROVED BY PUBLIC WORKS.
5. USE FERNCO COUPLING TO TRANSITION TO CONCRETE OR PVC PIPE AS APPROPRIATE.



<p align="center">STATEMENT OF USE</p> <p>THIS DOCUMENT AND ANY ILLUSTRATIONS HEREON ARE PROVIDED AS STANDARD CONSTRUCTION DETAILS WITHIN HIGHLAND CITY. DEVIATION FROM THIS DOCUMENT REQUIRES APPROVAL OF HIGHLAND CITY. HIGHLAND CITY CORP. CAN NOT BE HELD LIABLE FOR MISUSE OR CHANGES REGARDING THIS DOCUMENT.</p>				
NO.	REVISION DESCRIPTION	PV	APP	DATE

FILE: HIGHLAND STD DRAWINGS	
DRAWN BY: JMM	
DESIGN BY: CRW	
CHECKED BY: TMT	
LAST UPDATED: 11/2/2021	



LEGEND

No.	*	ITEM	NOTE
(A)		MUELLER OR ROMAC WITH IP TAP	SINGLE OR DOUBLE STRAP STAINLESS STEEL BAND WITH TEFLON COATING
(B)		RING AND COVER	CAST IRON COVER (grass) WITH KNOCKOUT DUCTILE COVER (driveway) WITH RADIO READ HOLE
(C)		METER BOX (18" DIAMETER) (36" DEEP)	METER BARRELS A.D.S. WHITE IN COLOR
(D)	*	RESIDENTIAL DUAL CHECK	INSTALLED BY WATER DEPT. AT METER SET
(E)		3/4" PACK JOINT (PJ) ANGLE METER VALVE	FORD 300 BALL ANGLE METER VALVE
(F)		COPPER PIPE 3/4"	TYPE K (SOFT) 3/4" (UPGRADE TO 1" IF OVER 50')
(G)		CORPORATION STOP CTS X IRON PIPE SIZE	MUELLER 300 BALL TYPE CORPORATION STOP OR FORD FB1100
(H)	*	WATER METER	INSTALLED BY WATER DEPT. AT METER SET
(I)		COPPER OR POLY PIPE	CTS (COPPER TUBE SIZE) OR IPS (IRON PIPE SIZE)

* FURNISHED BY UTILITY AGENCY

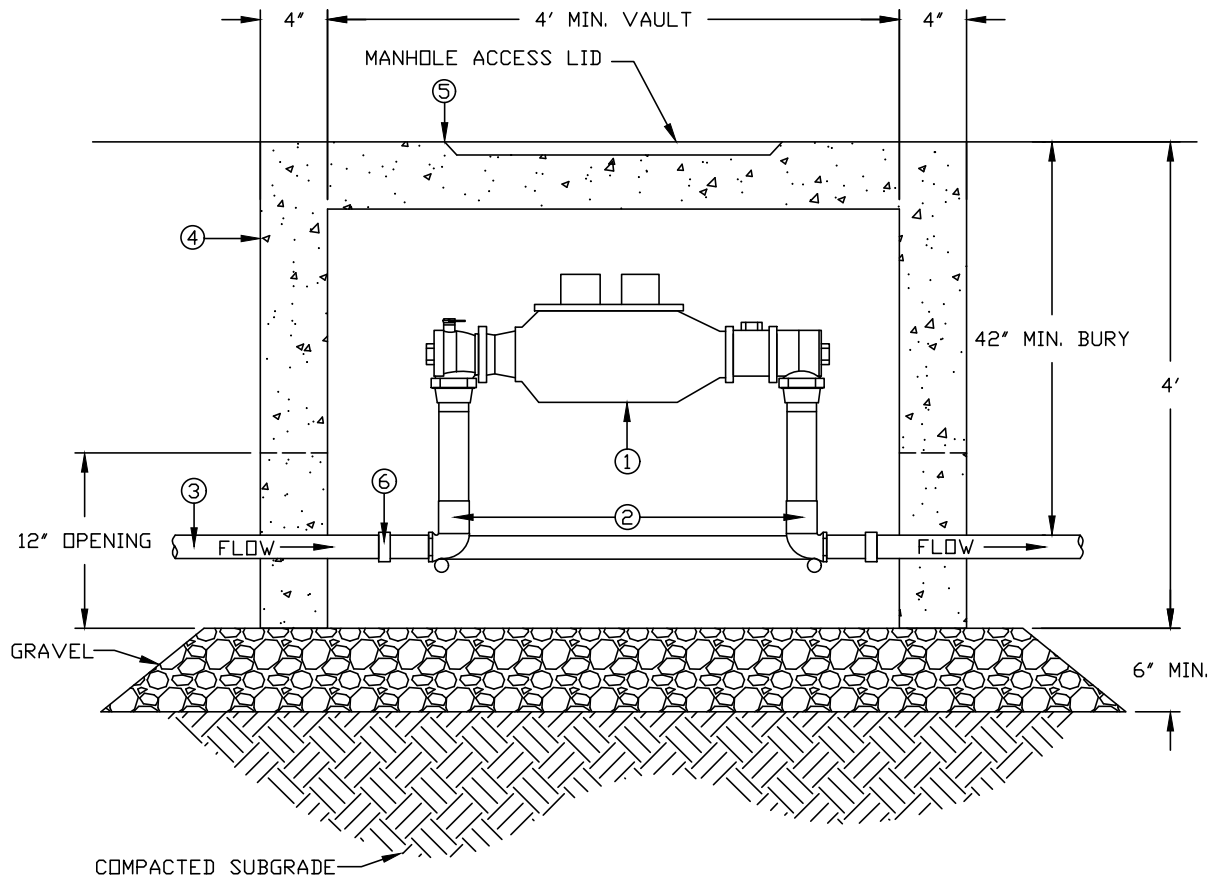
NOTE:
COMMERCIAL WATER SERVICES REQUIRE
21" METER BOX AND LID, AND 1" COPPER
AND FITTINGS.

Plot Date: 11/4/2021 2:16 PM, Plotted By: Mike Burns
Data Created: 5/11/2021, N:\WORKS\OFFICE\ENGINEERING\DIVISION\AUTOCAD DRAWINGS\HIGHLAND CITY STD DWGS\CITY STANDARDS\HIGHLAND CITY DWG-01 WATER METER DETAIL.DWG

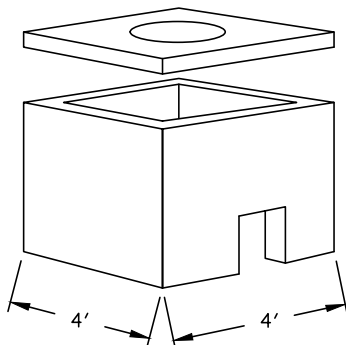
STATEMENT OF USE THIS DOCUMENT AND ANY ILLUSTRATIONS HEREON ARE PROVIDED AS STANDARD CONSTRUCTION DETAILS WITHIN HIGHLAND CITY. DEVIATION FROM THIS DOCUMENT REQUIRES APPROVAL OF HIGHLAND CITY. HIGHLAND CITY CORP. CAN NOT BE HELD LIABLE FOR MISUSE OR CHANGES REGARDING THIS DOCUMENT.		FILE: HIGHLAND CITY DWG-01 WATER METER DETAIL DRAWN BY: ### DESIGN BY: ### CHECKED BY: ### LAST UPDATED: 5/11/2021		HIGHLAND CITY PUBLIC WORKS AND ENGINEERING WATER METER DETAIL	STD DWG # DW-01
NO.	REVISION DESCRIPTION	BY	APR. DATE		



1.5"-2" METER SETTER



#	PART	MANUFACTURER MODEL/ CAT. NO.
1.	1.5"-2" COMPOUND METER	FURNISHED BY HIGHLAND CITY
2.	1.5"-2" METER SETTER	FORD VBH 47-18 OR VBH 46-18 WITH PADLOCK RING 18" RISE MUELLER H-1422-2
3.	1.5"-2" TYPE "K" SOFT COPPER ROLLED TUBING OR BLUE POLY (CTS)-NSF APPROVED	
4.	4'x4' PRECAST CONCRETE METER VAULT	(OR APPROVED EQUIVALENT)
5.	MAN HOLE LID	
6.	1.5"-2" COMPRESSION	
7.	SERVICE SADDLE- DOUBLE STRAP - STAINLESS STEEL DOUBLE STRAP - BRONZE	NYLON-COATED ROMAC TYPE 202-NS ROMAC TYPE 202-B



STATEMENT OF USE

THIS DOCUMENT AND ANY ILLUSTRATIONS HEREON ARE PROVIDED AS STANDARD CONSTRUCTION DETAILS WITHIN HIGHLAND CITY. DEVIATION FROM THIS DOCUMENT REQUIRES APPROVAL OF HIGHLAND CITY. HIGHLAND CITY CORP. CAN NOT BE HELD LIABLE FOR MISUSE OR CHANGES REGARDING THIS DOCUMENT.

FILE: HIGHLAND CITY DW-02 COMMERCIAL METER VAULT DETAIL

DRAWN BY: ###

DESIGN BY: ###

CHECKED BY: ###

LAST UPDATED: 5/10/2021

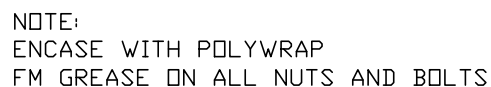


HIGHLAND CITY
PUBLIC WORKS AND ENGINEERING

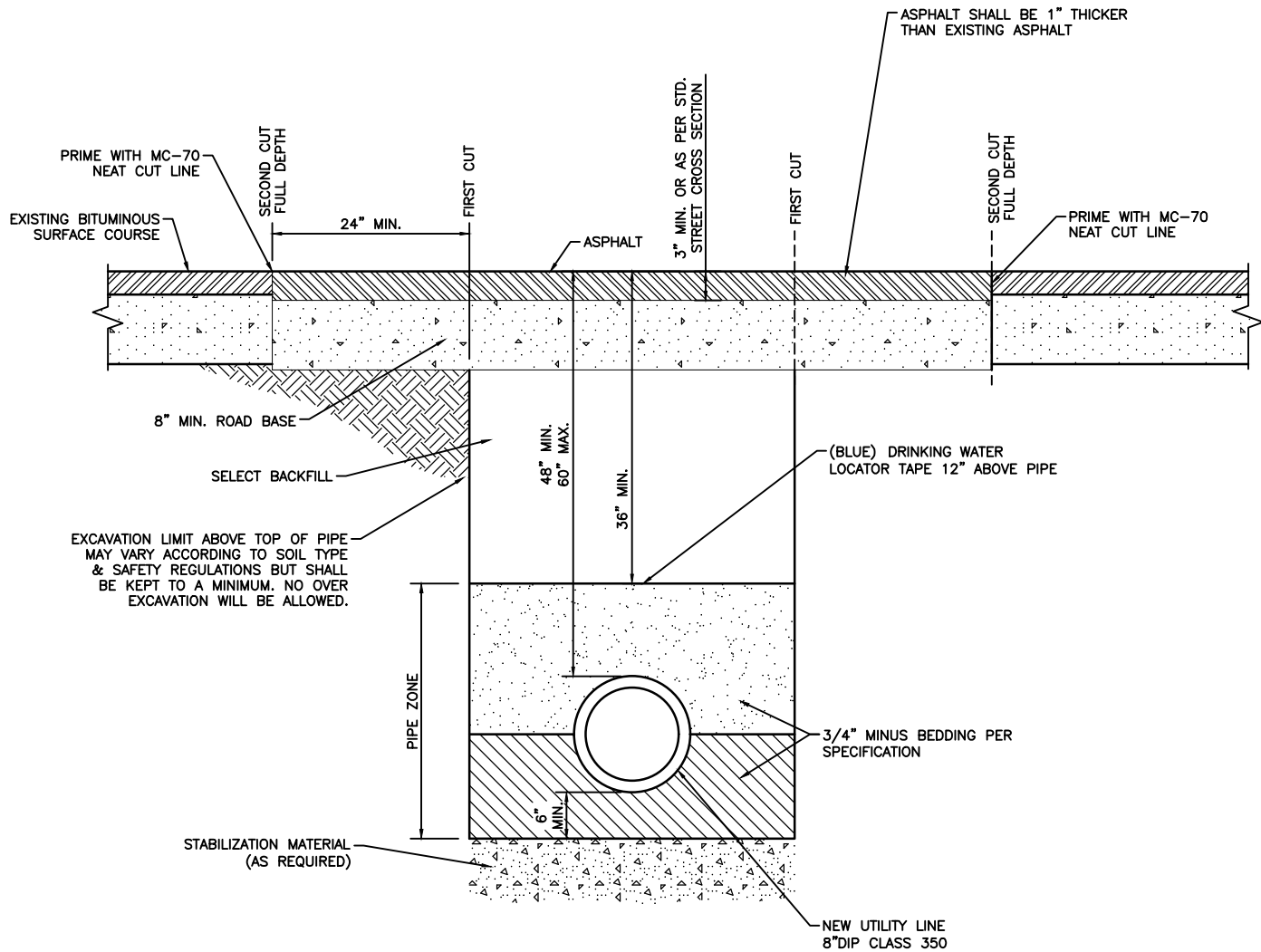
COMMERCIAL WATER METER VAULT

STD DWG #

DW-02



DW-03



NOTE:

1. USE APWA AS GUIDE.
2. POLYWRAP (AWWA) C 105.
3. FM GREASE ON BOLTS.
4. PG 58-28 PERFORMANCE GRADED ASPHALT.

STATEMENT OF USE
THIS DOCUMENT AND ANY ILLUSTRATIONS HEREON ARE PROVIDED AS STANDARD CONSTRUCTION DETAILS WITHIN HIGHLAND CITY. DEVIATION FROM THIS DOCUMENT REQUIRES APPROVAL OF HIGHLAND CITY. HIGHLAND CITY CORP. CAN NOT BE HELD LIABLE FOR MISUSE OR CHANGES REGARDING THIS DOCUMENT.

FILE: HIGHLAND STD DRAWINGS

DRAWN BY: JMM
DESIGN BY: CRW
CHECKED BY: TMT



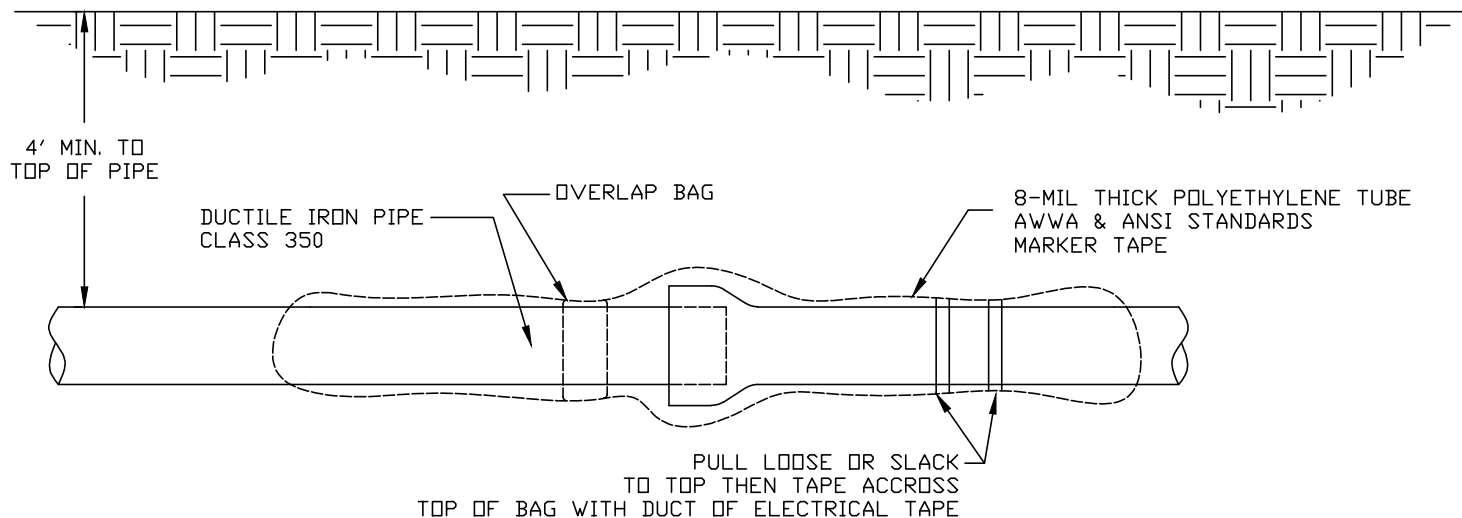
HIGHLAND CITY
PUBLIC WORKS AND ENGINEERING

WATER TRENCH DETAIL

STD DWG #

DW-04

NO.	REVISION DESCRIPTION	BY	APR	DATE	LAST UPDATED: 5/11/2021



STATEMENT OF USE

STATEMENT OF USE
THIS DOCUMENT AND ANY ILLUSTRATIONS HEREON ARE PROVIDED AS
STANDARD CONSTRUCTION DETAILS WITHIN HIGHLAND CITY. DEVIATION
FROM THIS DOCUMENT REQUIRES APPROVAL OF HIGHLAND CITY.
HIGHLAND CITY CORP. CAN NOT BE HELD LIABLE FOR MISUSE OR
CHANGES REGARDING THIS DOCUMENT.

FILE: HIGHLAND CITY DW-05 POLYETHYLENE WRAP DETAIL

DRAWN BY: #####

DESIGN BY: #####

CHECKED BY: #####

LAST UPDATED: 5/10/2021



HIGHLAND CITY
PUBLIC WORKS AND ENGINEERING

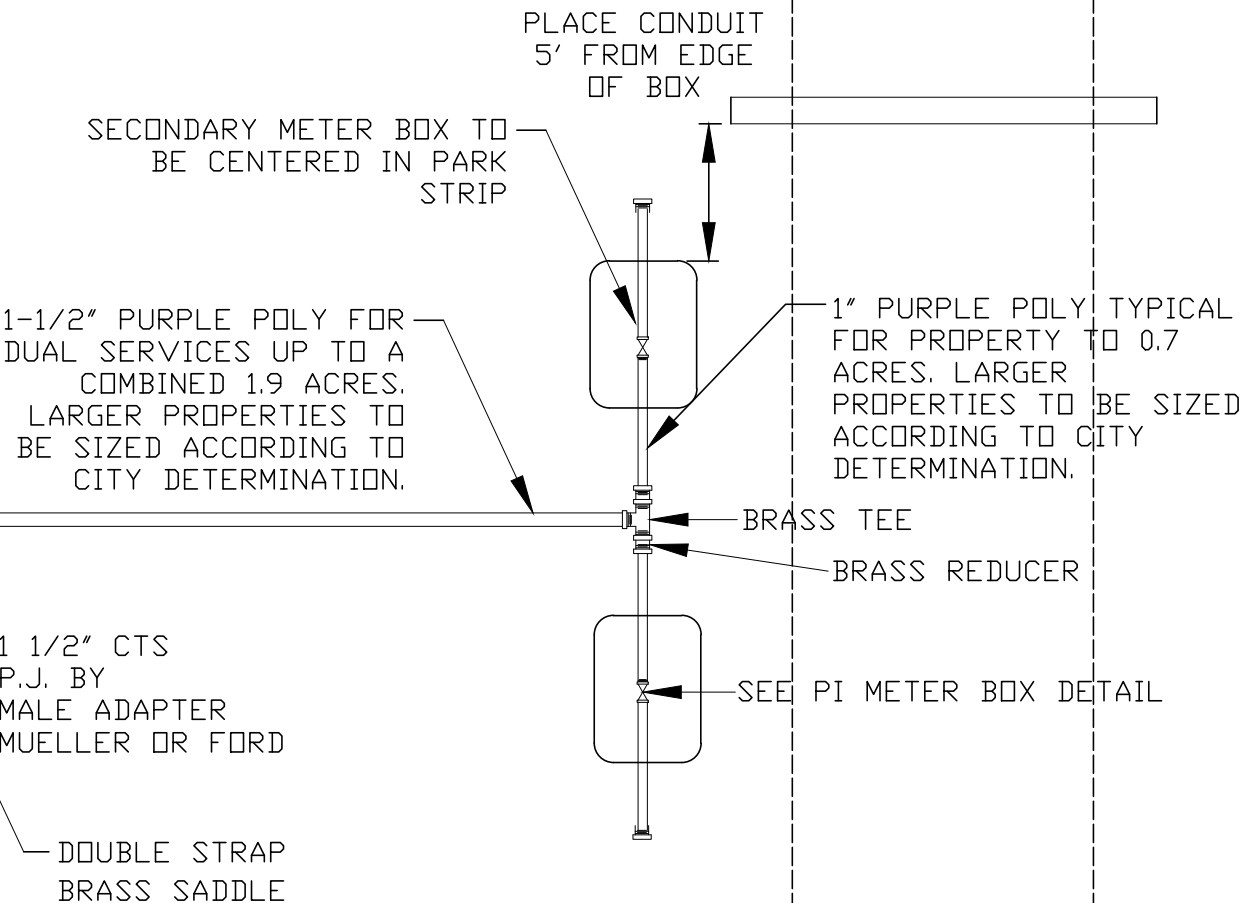
POLYETHYLENE WRAP DETAIL

STD DWG #

DW-05

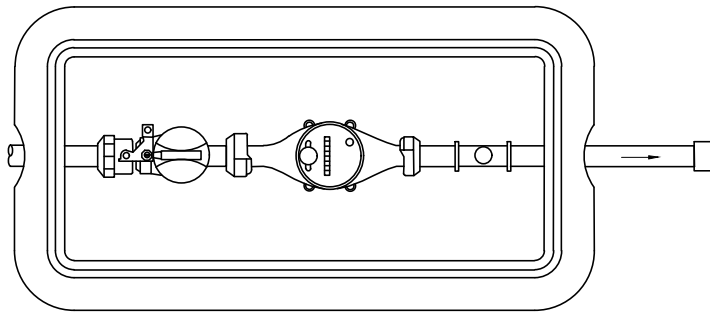
NO.	REVISION DESCRIPTION	BY	APR.	DATE
-----	----------------------	----	------	------

DUAL SERVICE LOCATED
ON PROPERTY LINE

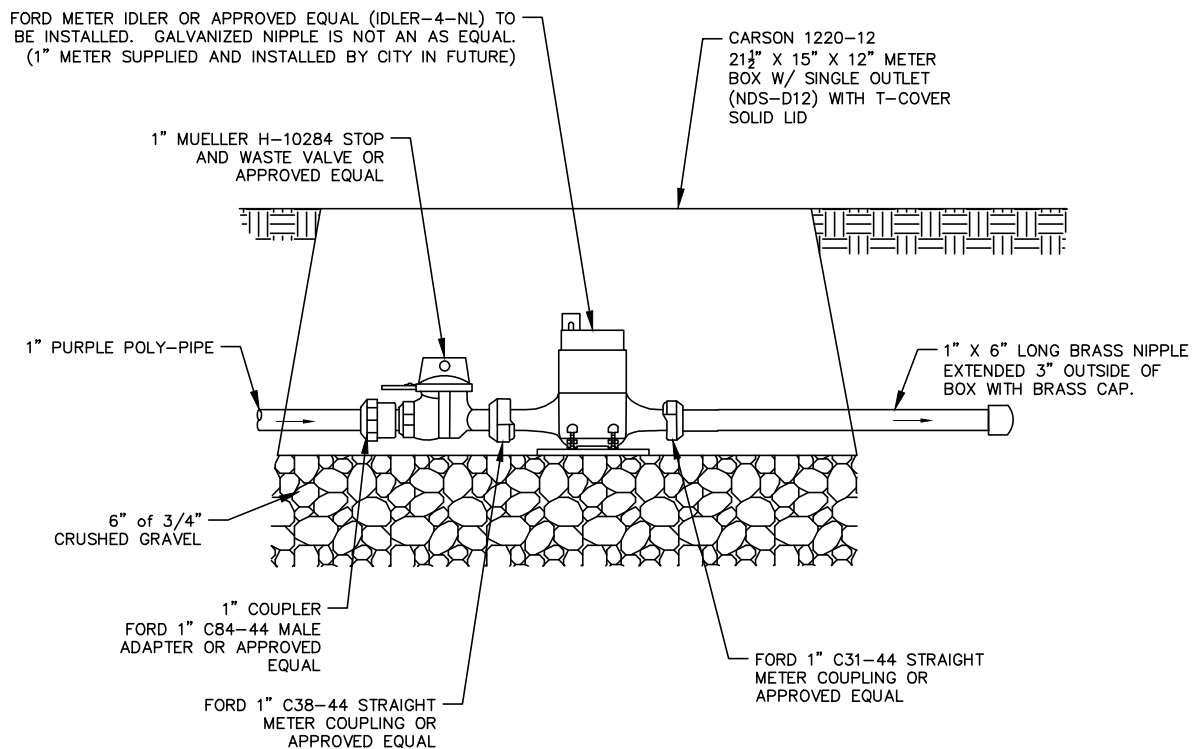


3" PVC SCH 40 CONDUIT PLACED
BENEATH SIDEWALK AT SAME
DEPTH AS PI SERVICE, EXTEND 6"
BEYOND EACH SIDE OF WALK &
CAP, MARK WITH 12" STAKE.
SLEEVE SHALL NOT BE IN LINE
WITH ANY OTHER UTILITY BOXES.
(TYPICAL)

STIFFNER INSERT TO BE USED ON CONNECTION TO ALL POLY JOINTS
TRACER WIRE TO EXTEND TO BOX FROM MAIN



PLAN



SECTION

NOTES:

1. 1" METER PROVIDED BY CITY IN FUTURE
2. ALL PIPES SHALL BE BURIED WITH 14 GAUGE SOLID THHN TRACER WIRE
3. PROPERTY OWNERS SHALL NOT REMOVE/MODIFY ANY PORTION OF THE METER BOX.

Plot Date: 5/11/2021 9:52 AM Plotted By: Mike Burns
 Date Created: 3/2/2020 5:11 PM WORKS OFFICE ENGINEERING DIVISION/AUTOCAD DRAWINGS/HIGHLAND CITY STD DWGS/HIGHLAND CITY STD DWGS/HIGHLAND CITY PI-02 1-INCH METER BOX.DWG

STATEMENT OF USE
 THIS DOCUMENT AND ANY ILLUSTRATIONS HEREON ARE PROVIDED AS STANDARD CONSTRUCTION DETAILS WITHIN HIGHLAND CITY. DEVIATION FROM THIS DOCUMENT REQUIRES APPROVAL OF HIGHLAND CITY. HIGHLAND CITY CORP. CAN NOT BE HELD LIABLE FOR MISUSE OR CHANGES REGARDING THIS DOCUMENT.

FILE: HIGHLAND CITY PI-02 1-INCH METER BOX

DRAWN BY: ####

DESIGN BY: ####

CHECKED BY: ####

LAST UPDATED: 5/11/2021



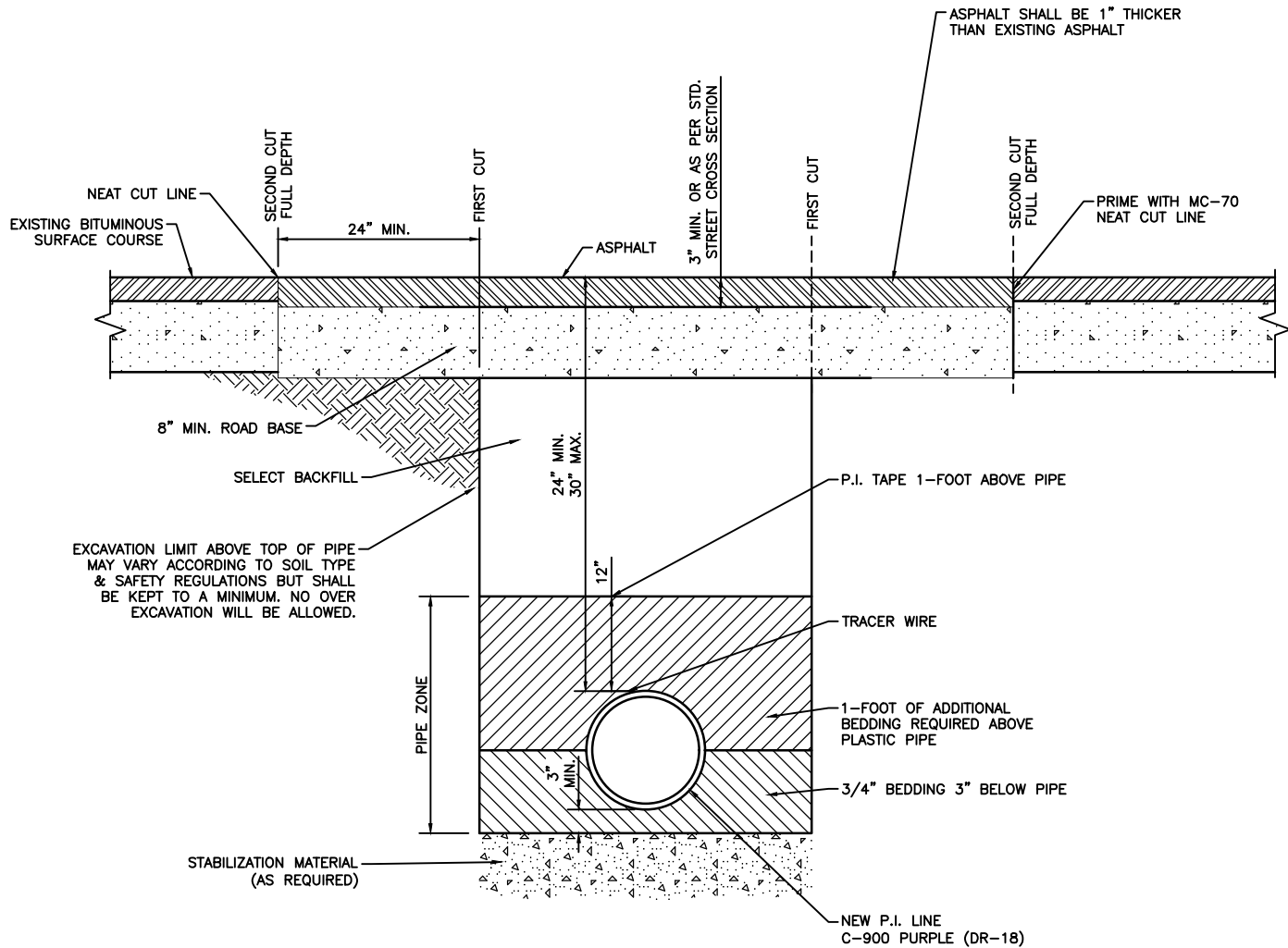
HIGHLAND CITY
 PUBLIC WORKS AND ENGINEERING

P.I. 1-INCH METER BOX DETAIL

STD DWG #

PI-02

NO.	REVISION DESCRIPTION	BY	APR	DATE



NOTE:

1. USE APWA AS GUIDE.
2. POLYWRAP (AWWA) C 105.
3. FM GREASE ON BOLTS.
4. PG 58-28 PERFORMANCE GRADED ASPHALT.

Plot Date: 5/11/2021 4:47 PM Plotted By: Mike Burns

Date Created: 5/11/2021 N:\WORKS\OFFICE\ENGINEERING\DIVISION\AUTOCAD DRAWINGS\HIGHLAND CITY STD DWGS\HIGHLAND CITY STD DWGS\CAD\HIGHLAND STD DRAWINGS.DWG

STATEMENT OF USE			
THIS DOCUMENT AND ANY ILLUSTRATIONS HEREON ARE PROVIDED AS STANDARD CONSTRUCTION DETAILS WITHIN HIGHLAND CITY. DEVIATION FROM THIS DOCUMENT REQUIRES APPROVAL OF HIGHLAND CITY. HIGHLAND CITY CORP. CAN NOT BE HELD LIABLE FOR MISUSE OR CHANGES REGARDING THIS DOCUMENT.			
NO.	REVISION DESCRIPTION	BY	DATE

FILE: HIGHLAND STD DRAWINGS
DRAWN BY: JMM
DESIGN BY: CRW
CHECKED BY: TMT
LAST UPDATED: 5/11/2021



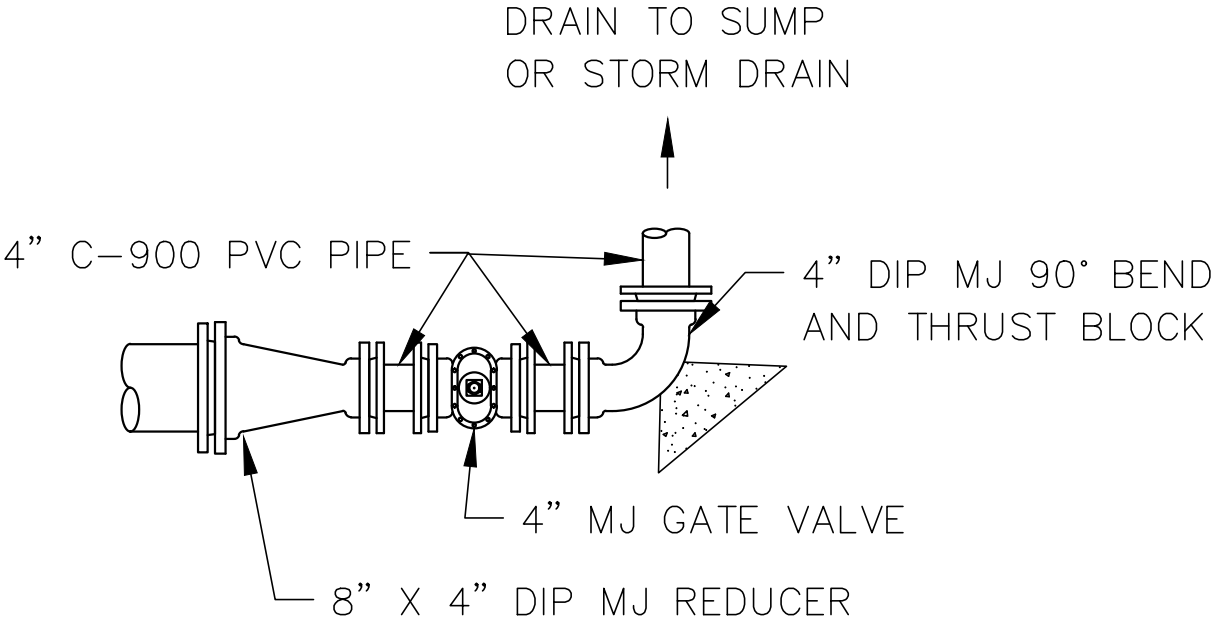
HIGHLAND CITY PUBLIC WORKS AND ENGINEERING

P.I. WATER LINE TRENCH DETAIL

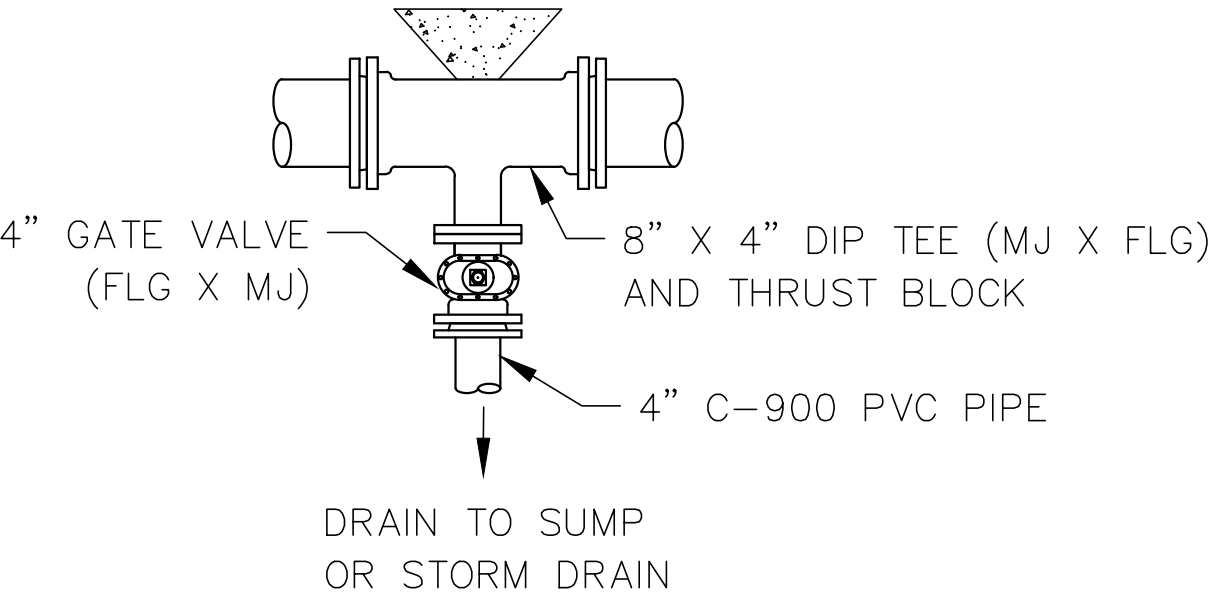
STD DWG #

PI-03

END OF LINE 4" DRAIN



LOW SPOT IN LINE



Plot Date: 5/11/2021 1:23 PM, Plotted By: Mike Burns
Data Created: 12/20/2015 11:00 AM, WORKS OFFICE/ENGINEERING DIVISION/AUTOCAD DRAWINGS/HIGHLAND CITY STD DWGS/HIGHLAND CITY STD DWGS/HIGHLAND CITY STD DWGS/HIGHLAND CITY PI-04 DRAIN DETAIL DWG

STATEMENT OF USE			
THIS DOCUMENT AND ANY ILLUSTRATIONS HEREON ARE PROVIDED AS STANDARD CONSTRUCTION DETAILS WITHIN HIGHLAND CITY. DEVIATION FROM THIS DOCUMENT REQUIRES APPROVAL OF HIGHLAND CITY. HIGHLAND CITY CORP. CAN NOT BE HELD LIABLE FOR MISUSE OR CHANGES REGARDING THIS DOCUMENT.			
NO.	REVISION DESCRIPTION	BY	DATE

FILE: HIGHLAND CITY PI-04 DRAIN DETAIL
DRAWN BY: ###
DESIGN BY: ###
CHECKED BY: ###
LAST UPDATED: 5/11/2021

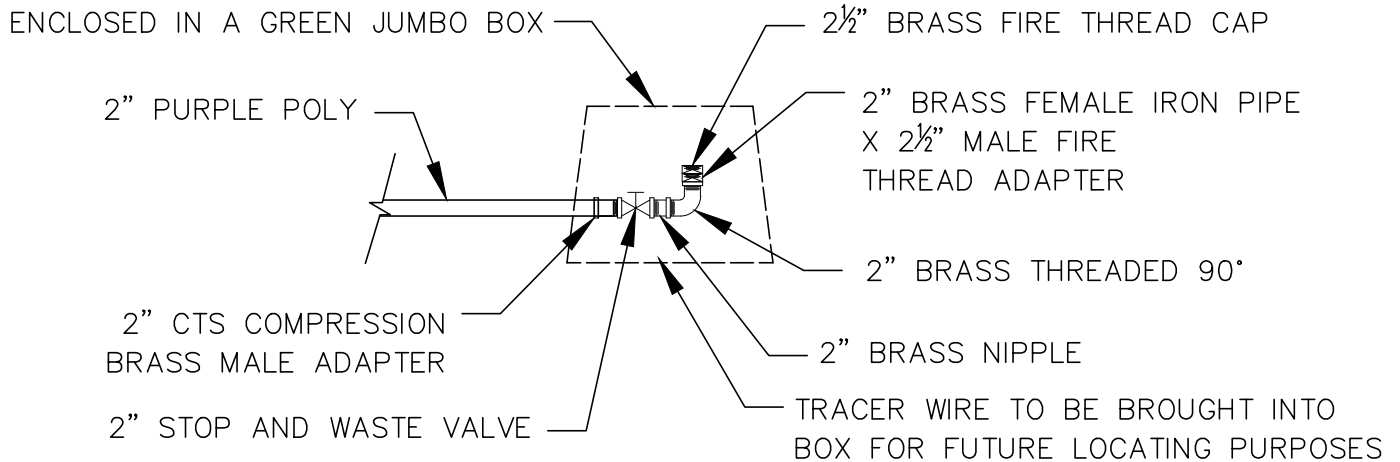


HIGHLAND CITY
PUBLIC WORKS AND ENGINEERING
P.I. DRAIN DETAIL

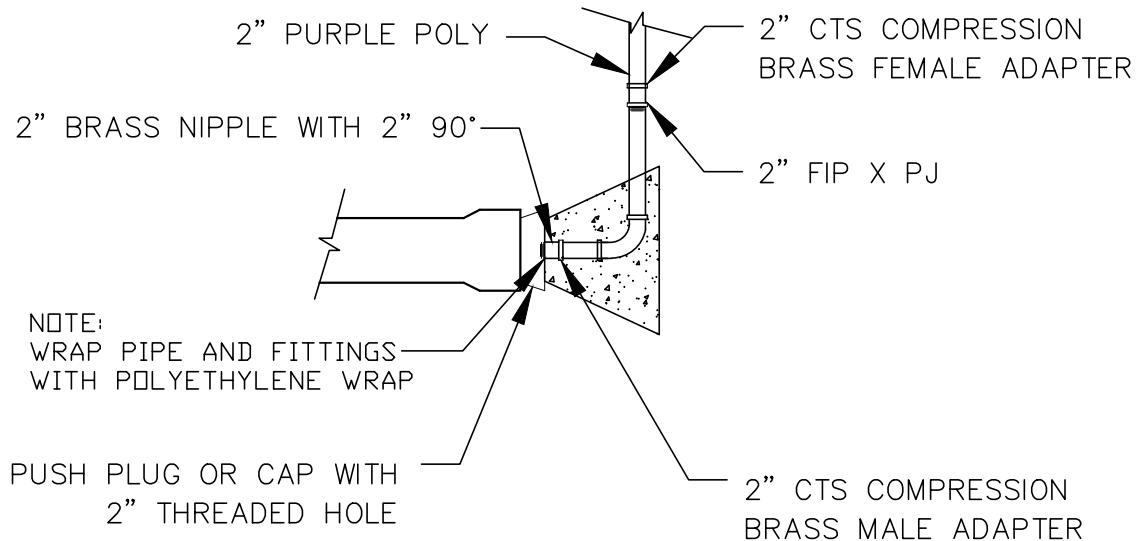
STD DWG #
PI-04

P.I. BLOW-OFF IN CUL-DE-SAC END IN PARKSTRIP ON PROPERTY LINE

(THIS IS USED WHEN FLOW DRAINS OUT OF CUL-DE-SAC)



SIDE VIEW



TOP VIEW

Plot Date: 5/11/2021 1:28 PM Plotted By: Mike Burns

Data Created: 3/2/2015 11:00 AM WORKS OFFICE ENGINEERING DIVISION

STATEMENT OF USE
 THIS DOCUMENT AND ANY ILLUSTRATIONS HEREON ARE PROVIDED AS STANDARD CONSTRUCTION DETAILS WITHIN HIGHLAND CITY. DEVIATION FROM THIS DOCUMENT REQUIRES APPROVAL OF HIGHLAND CITY. HIGHLAND CITY CORP. CAN NOT BE HELD LIABLE FOR MISUSE OR CHANGES REGARDING THIS DOCUMENT.

FILE: HIGHLAND CITY PI-05 BLOW-OFF IN CUL-DE-SAC DETAIL
 DRAWN BY: ###
 DESIGN BY: ###
 CHECKED BY: ###



HIGHLAND CITY
 PUBLIC WORKS AND ENGINEERING

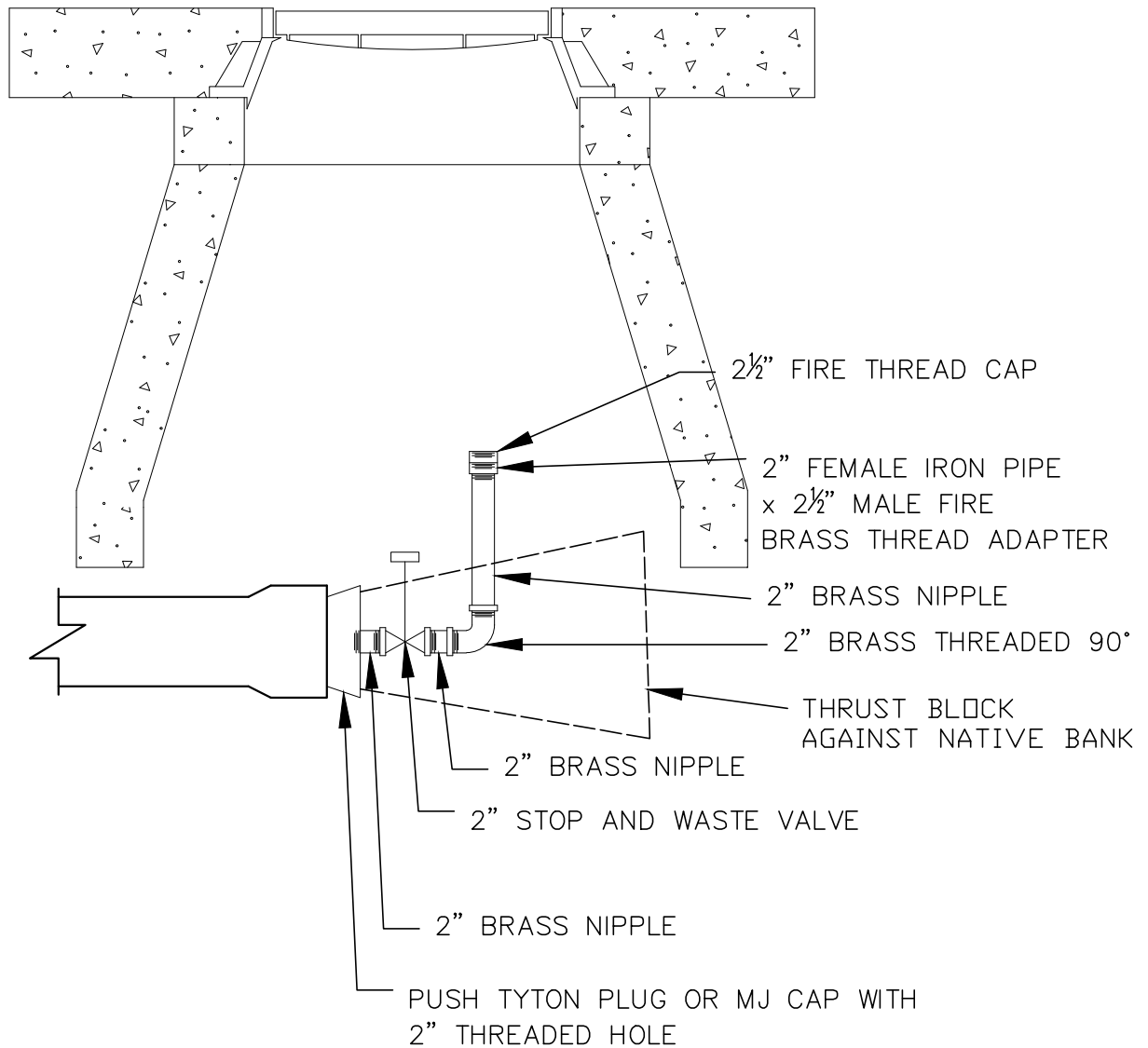
P.I. BLOW OFF IN CUL-DE-SAC

STD DWG #

PI-05

NO.	REVISION DESCRIPTION	BY	APR	DATE	LAST UPDATED: 5/11/2021

TEMPORARY P.I. BLOW-OFF



NOTE:

THIS IS ENCLOSED IN A 60" MANHOLE CONE
MANHOLE LID TO SAY "IRRIGATION". CONE TO
BE PLACED OVER PIPE AND THRUST BLOCK.
NO LOAD SHALL BEAR ON THE PIPE FROM THE CONE.
TRACER WIRE TO END IN BLOWOFF.

Plot Date: 5/11/2021 9:53 AM Plotted By: Mike Burns
Date Created: 12/2015 I:\WORKS\OFFICE\ENGINEERING\DIVISION\AUTOCAD DRAWINGS\HIGHLAND CITY STD DWGS\CITY STANDARDS\CITY STD DWGS\PI BLOW-OFF DETAIL.DWG

STATEMENT OF USE
THIS DOCUMENT AND ANY ILLUSTRATIONS HEREON ARE PROVIDED AS
STANDARD CONSTRUCTION DETAILS WITHIN HIGHLAND CITY. DEVIATION
FROM THIS DOCUMENT REQUIRES APPROVAL OF HIGHLAND CITY.
HIGHLAND CITY CORP. CAN NOT BE HELD LIABLE FOR MISUSE OR
CHANGES REGARDING THIS DOCUMENT.

FILE: HIGHLAND CITY PI-06 TEMPORARY PI BLOW-OFF DETAIL

DRAWN BY: ###

DESIGN BY: ###

CHECKED BY: ###

LAST UPDATED: 5/11/2021



HIGHLAND CITY
PUBLIC WORKS AND ENGINEERING

TEMPORARY P.I. BLOW-OFF DETAIL

STD DWG #

PI-06

NO.	REVISION DESCRIPTION	BY	APR	DATE